



# **Touchwin SCADA**

## **Manual**

WUXI XINJE ELECTRIC CO., LTD.

Data No. HC04 20120227 2C6

# CATALOG

1 TOUCHWIN SCADA .....	3
1-1. Installation .....	3
1-2. Uninstallation.....	6
1-3. Soft dog.....	6
1-3-1. UsedRockey.dll.....	6
1-3-2. Softdog .....	6
2 MAKE THE PROJECT .....	8
2-1. Build a new project .....	8
2-2. Simulate online .....	11
2-3. Build SCADA .....	12
3 TOUCHWIN SOFTWARE .....	14
3-1. Browser.....	14
3-2. Data logger.....	17
4 Q&A .....	22
Q1 How to get the SCADA software? .....	22
Q2 How to get the SCADA manual? .....	22
Q3 Why cannot use the SCADA after running for 30 minutes? .....	22
Q4 Why the SCADA cannot install or work normally? .....	22
Q5 What language does the SCADA software support? .....	23
Q6 The SCADA screen resolution is more than the PC.....	23
Q7 How to update the UsedRockey.dll file? .....	24
Q8 The notes for using the softdog. ....	24
Q9 Communicating error is shown when SCADA is running. ....	25
Q10 Why the SCADA communication speed is slow with PLC?.....	25
Q11 What is the device ID of data export in SCADA?.....	26
Q12 How to exit the SCADA?.....	27

# 1 TouchWin SCADA

## 1-1. Installation

Touchwin SCADA is the same to Touchwin software.

1. Get the software

Please download the software on [www.xinje.com](http://www.xinje.com).

2. PC hardware requirements

CPU: INTEL Pentium II and higher

Memory: larger than 64MB

HardDisk: 2.5GB and above

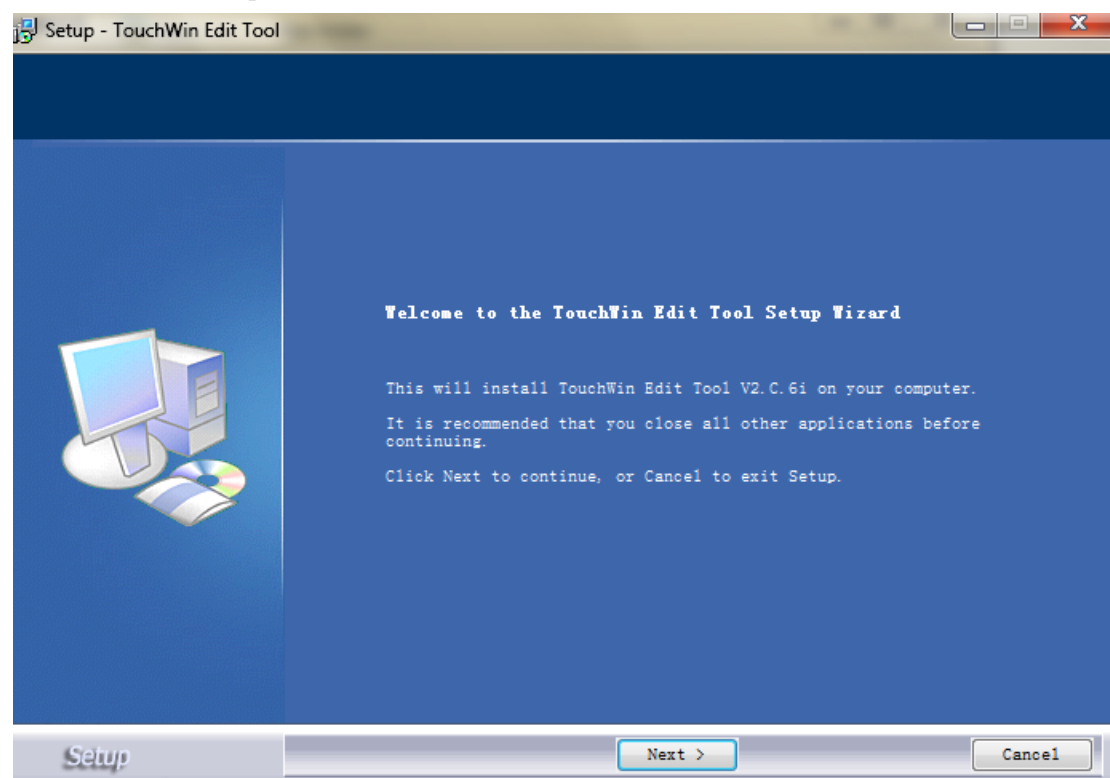
Display: resolution 800 x 600 32bits true color

3. OS

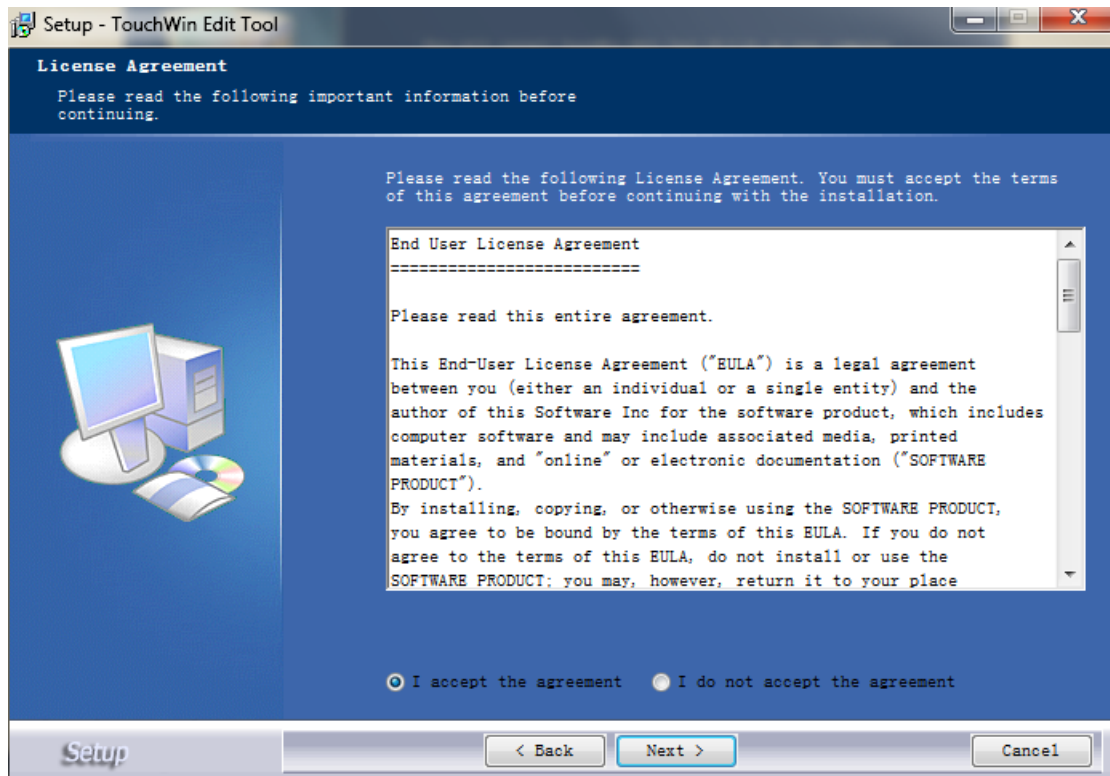
Windows XP/Windows ME/WIN 7

4. Installation steps (Touchwin v2.c.6 )

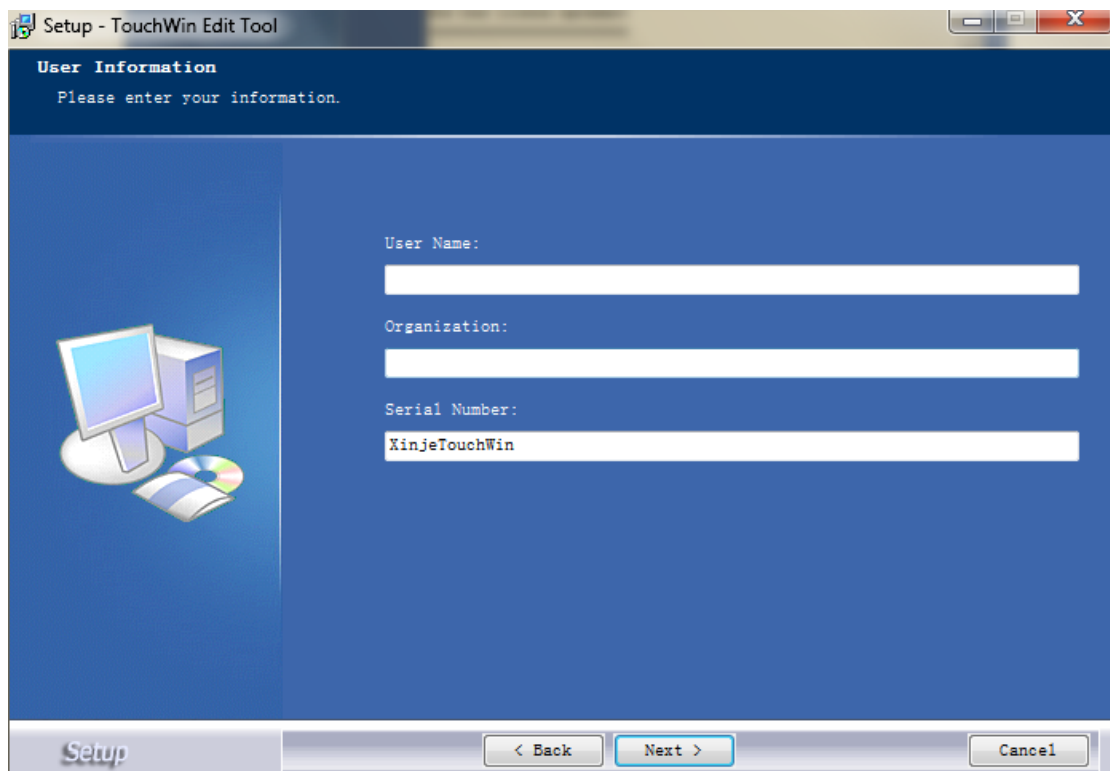
(1) Double click setup.exe to start the installation.



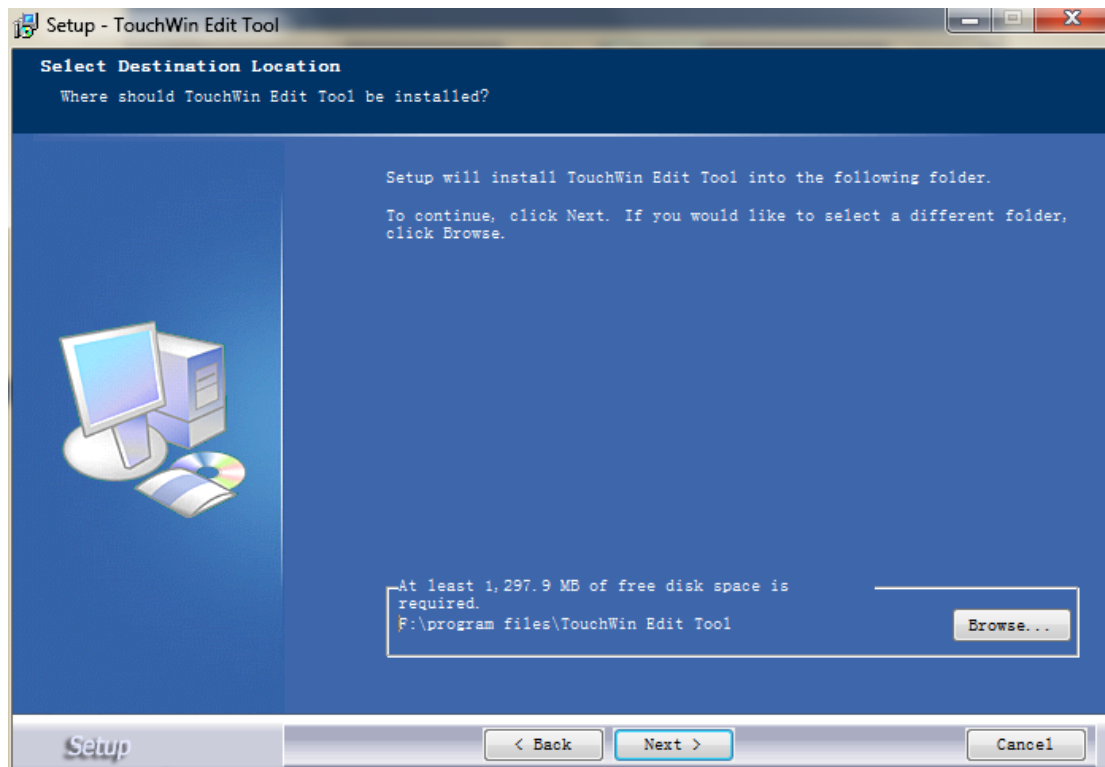
(2) click next and choose "I accept the agreement".



(3) Input the user name, organization and serial number (XinjeTouchWin), click next.



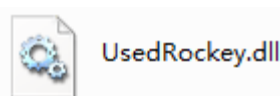
(4) Choose the installation location and click next until finish the installation.




(5) The Touchwin software icon will show on the PC desk.



(6) Download UseRocky.dll from [www.xinje.com](http://www.xinje.com), use it to instead of the old UsedRockey.dll in installation folder Thinget\ AutoWin.



(7) Double click the  to enter the SCADA.



Touchwin SCADA can run half an hour for free. User need to buy USB softdog to use it continuously. Please refer to chapter 1-3 for details.

## 1-2. Uninstallation



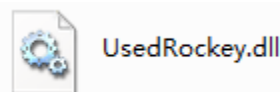
Way 1: click `unins000.exe` in the software installation folder to uninstall the software.

Way2: click start /Xinje/Touchwin edit tool/uninstall to uninstall the software.

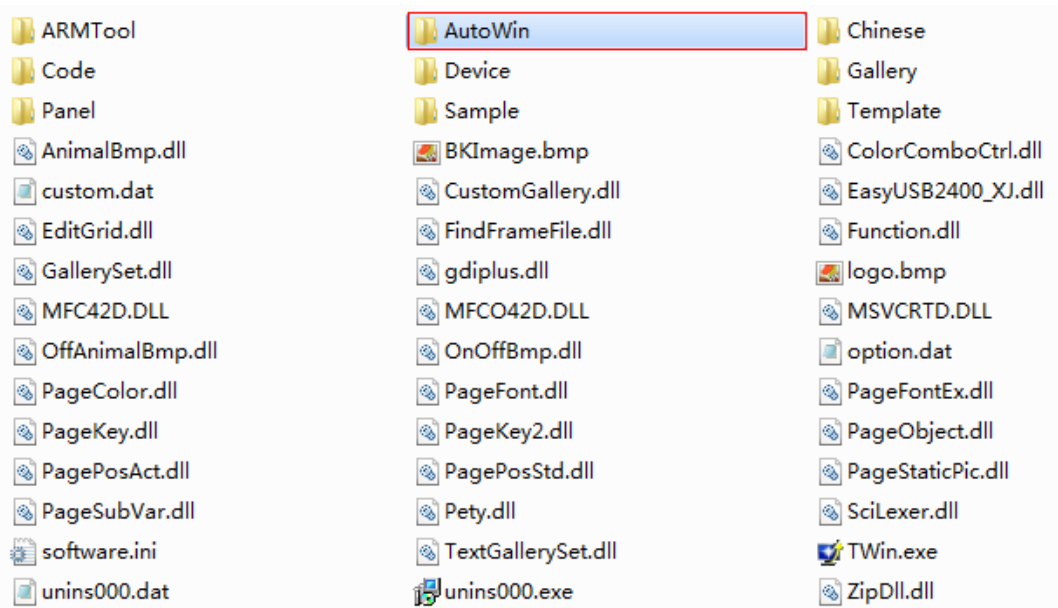
## 1-3. Soft dog

### 1-3-1. UsedRockey.dll

1. Download the UseRocky.dll from [www.xinje.com](http://www.xinje.com).



2. Open C:\Program Files\Thinget\TouchWin for TH, open AutoWin folder:



3. Replace the old UseRocky.dll with new one downloaded from xinje.com.

Note: 1. Please close the Touchwin software when replacing the file.

2. Please do the replace operation if install the software again.

### 1-3-2. Softdog

Touchwin SCADA can run continuously with softdog. Otherwise it will stop running after half an hour. The softdog can be used to many PCs. But it only can run in one PC at the same time.

1. Connect the softdog to PC USB port. It will auto-run the installation.
2. After install the softdog, you can use the Touchwin SCADA continuously.



- (1) Please connect softdog to PC before running the Touchwin SCADA.
- (2) Softdog can be used on many PCs. But it only can run in one PC at the same time.
- (3) Unkown problem will appear if the softdog is disconnected when the Touchwin SCADA is running.

## 2 Make the project

This chapter will introduce how to make a project through Touchwin SCADA.


Touchwin SCADA software features:

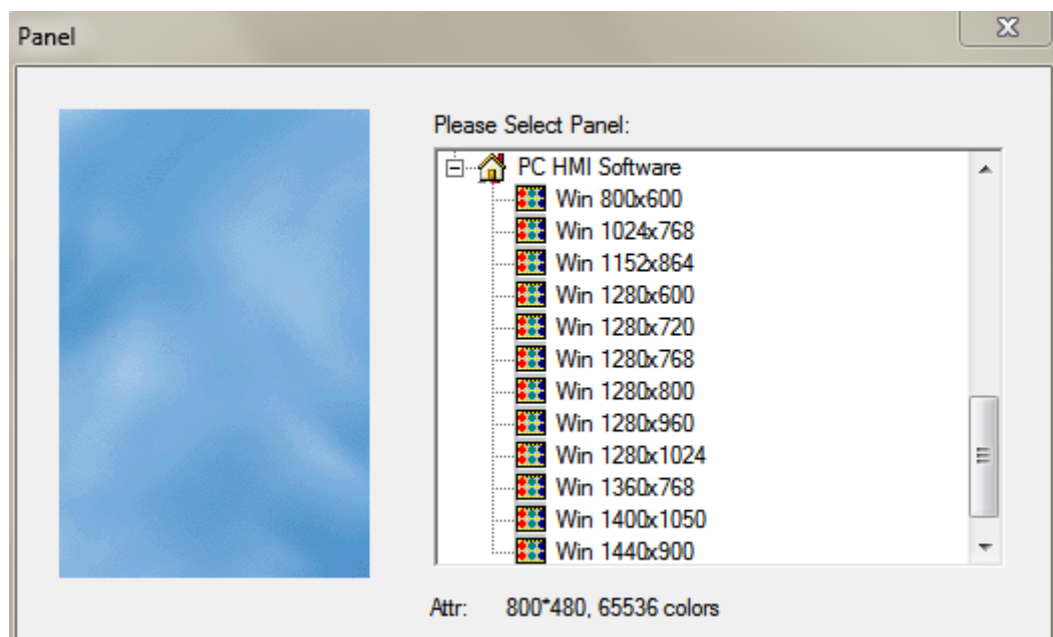
- Rich 3D picture library, colorful buttons and graphs
- One button integrated many functions
- Various graphs and trend maps: history data map, alarm list and so on
- Support Xinje Ethernet module and devices with Modbus protocol
- Nine levels password protection
- Real-time data export and import



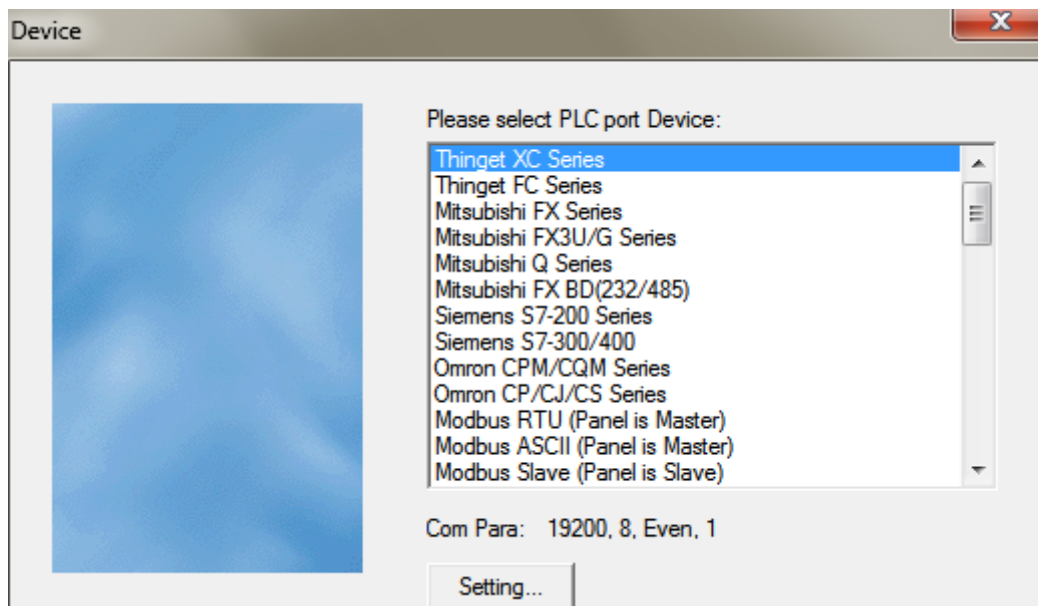
**Confirm the display resolution and device model at first.**

### 2-1. Build a new project

1. Open Touchwin software, click  or file/new to build a new project.
2. Choose the display resolution:



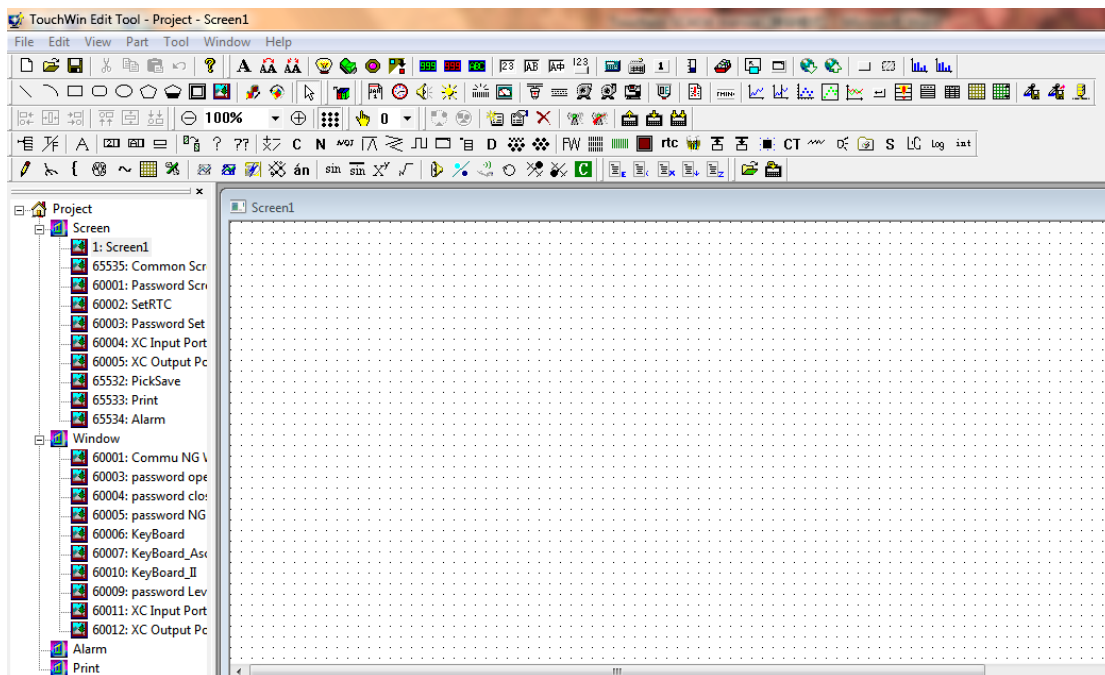
3. Choose the PLC port device: please choose Thinget XC series or Modbus



4. Choose the download port device. If download port doesn't connect device, please choose none device linked. Otherwise, choose Thinget XC series or Modbus.
5. If there are Ethernet devices such as TBOX, GBOX, please fill in the user name and ID. Otherwise, please click next.

6. Fill in the project name, author and content then click finish.

7. The new project screen is shown like this



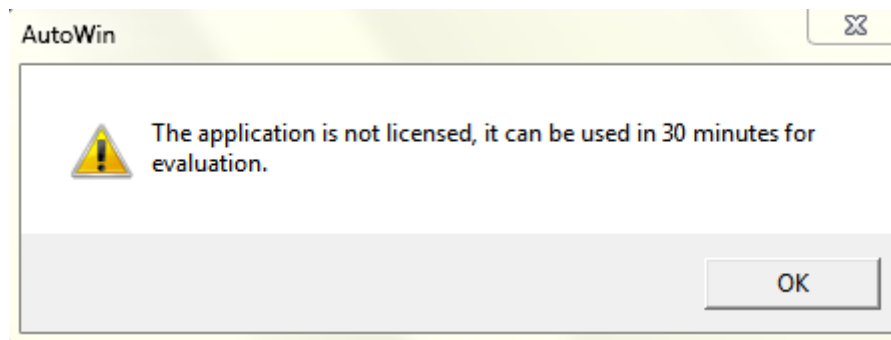
Note: when using the parts or buttons in the screen, it needs to choose the device type. If there are net devices (TBOX or GBOX), please choose the net device. Otherwise, please choose PLC port or download port.

Please see the following window:

## 2-2. Simulate online

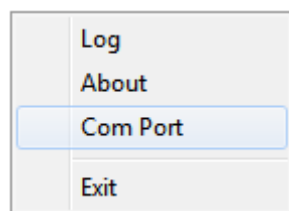
1. Click file/run online or  to enter simulate online.

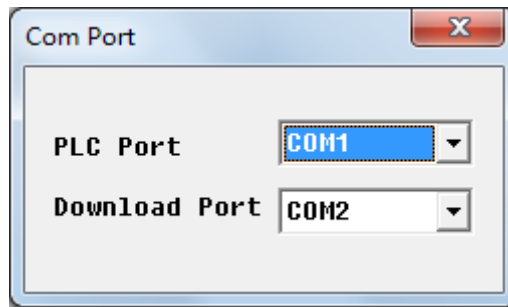
If the softdog is not connected to PC, it will show the following window:



**Simulate online function can support Modbus RTU device such as Xinje PLC and inverter. Please connect the softdog to PC before running the software.**

2. Right click the screen, choose Com port. This com port is PC serial port connects to PLC or other device.





- Log log and exit time
- About About AutoWin version
- Com Port choose the com port connect to PLC
- Exit exit

3. After these settings, exit the simulate window. Then open the simulate online again. Now user can monitor the PLC state through SCADA.



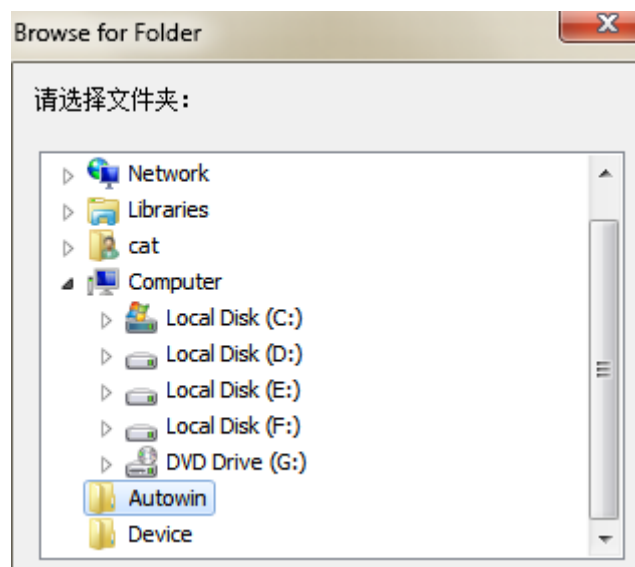
If “communicating” is shown in the SCADA software, confirm the com port settings. Make sure exit the simulate window and open again after setting the com port. Check whether the port is occupied by other software. Please connect the softdog to the PC, otherwise the Touchwin SCADA will close after 30 minutes.

### 2-3. Build SCADA

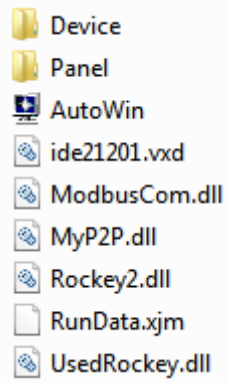
SCADA can replace the HMI to communicate with PLC. The function is same to simulate online.

#### Steps:


Click File/build SCADA, choose the folder to build the SCADA file.



The SCADA files are shown as the following:



- Device
- Panel
- AutoWin
- ide21201.vxd
- ModbusCom.dll
- MyP2P.dll
- Rockey2.dll
- RunData.xjm
- UsedRockey.dll

Double click  **AutoWin.exe** , you can simulate online.




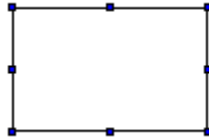
**Please connect the softdog to the PC before running the SCADA. Otherwise, the software will close after 30 minutes.**

## 3 TouchWin software

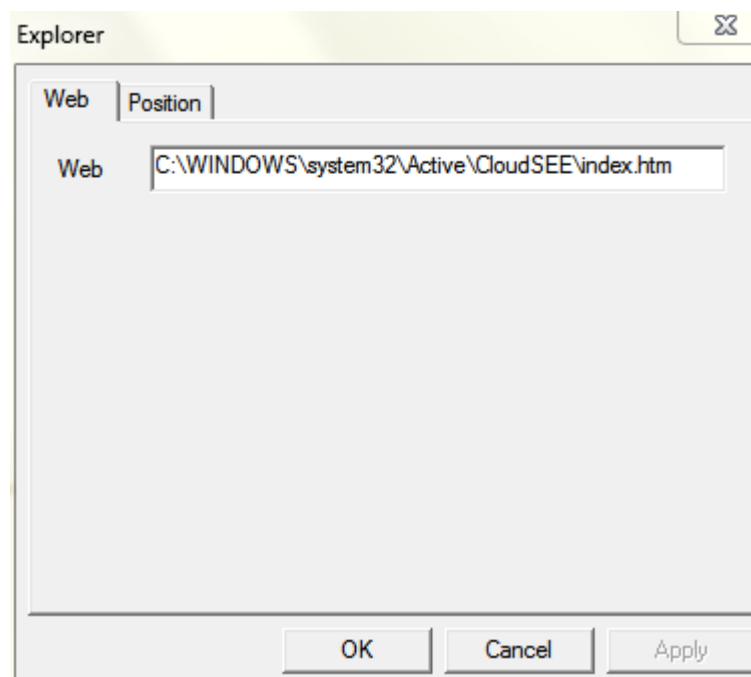
The user manual of TouchWin please refers to Touchwin manual. Here we only introduce the special component of SCADA.

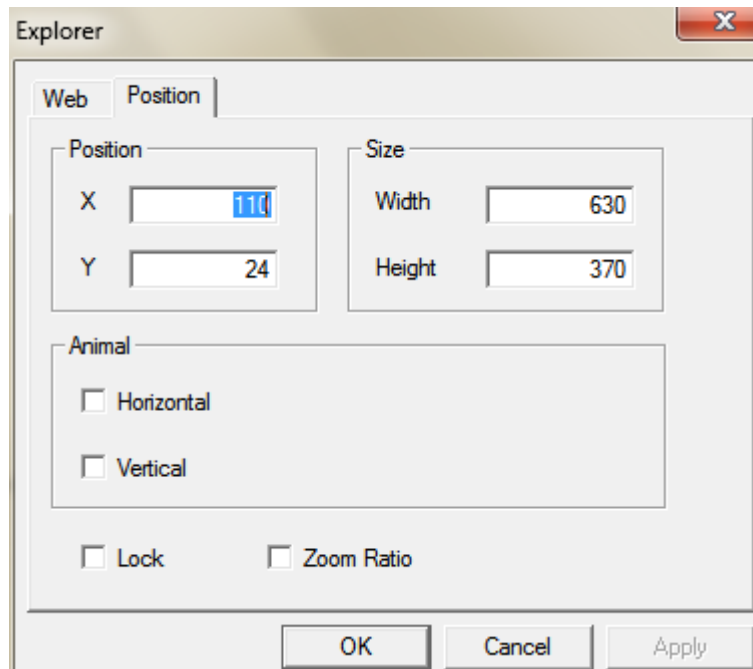
### 3-1. Browser

Click , drag the mouse to draw a browser window, press ESC to exit.

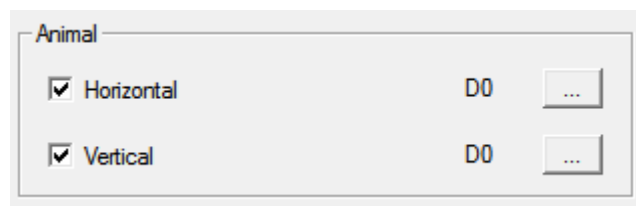


Double click the browser or right click to see the setting window. Fill in the internet address in web.





- Position the (X,Y) position of browser. The origin point is on the left top of the screen.
- Size the width and height of the browser.
- Animal the browser window can move horizontal or vertical.




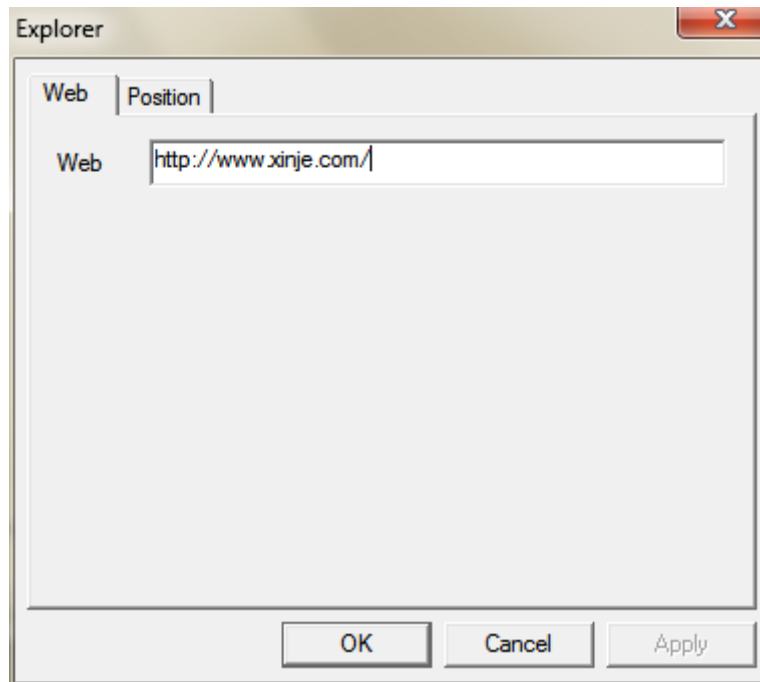
Horizontal: the browser position = X position + register value

Vertical: the browser position = Y position + register value

Lock lock the browser window in the screen

Zoom ratio set the zoom ratio of browser window (this function is in developing)


For example: click , fill in <http://www.xinje.com/>



Click simulate online or build SCADA. The xinje website will show in the browser window.



### 3-2. Data logger

Click  to show the data logger. Click ESC to exit.



#### ■ Data logger

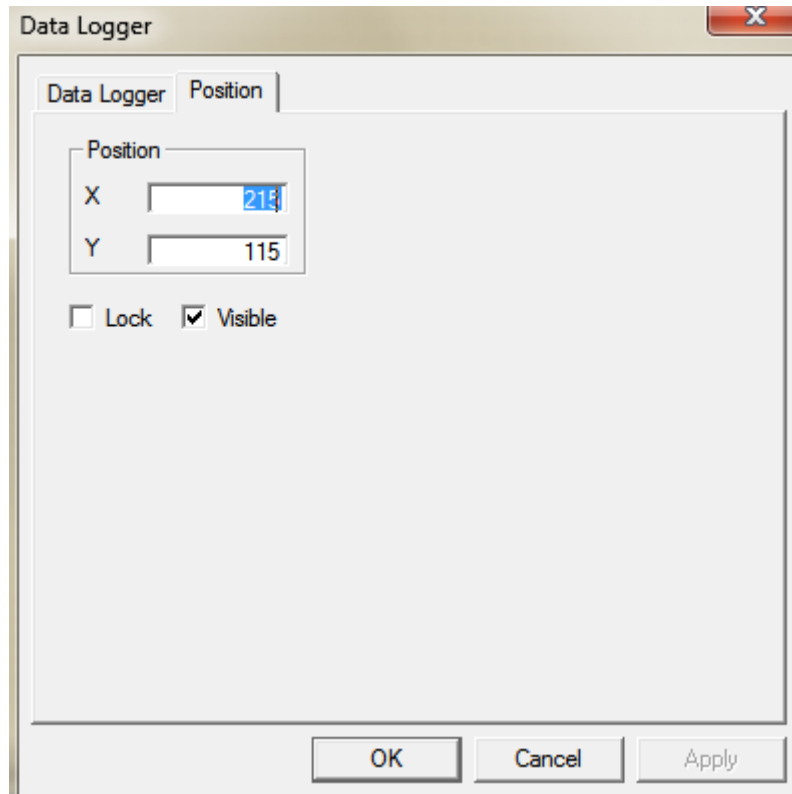
Data Logger	Triggle	

- Server: SQL Server name
- User: user ID
- Database: database name
- Password: the password to protect the user ID
- Data logger: the data content
- Triggle: the coil to trigger the data logger
- Add: add the data logger information
- Modify: modify the data logger information
- Delete: delete the data logger information




**It needs to install SQL Server and build the database in the PC. Then the data will record in the database.**

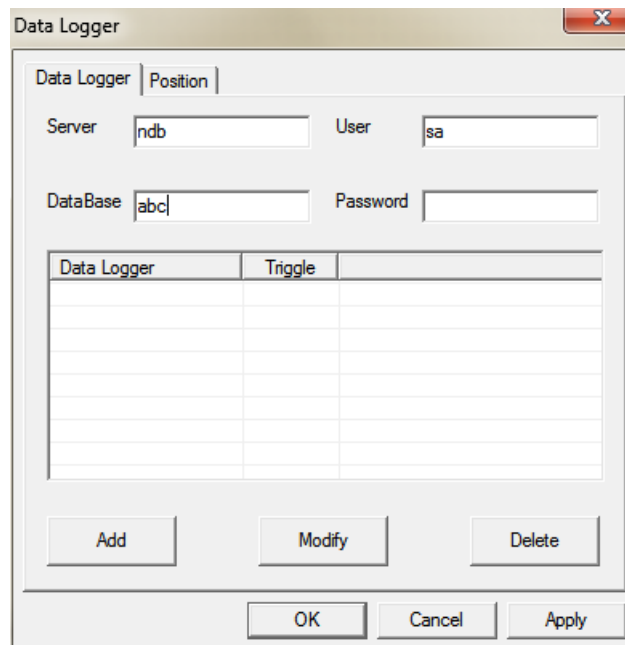
## ■ Position



The 'Data Logger' dialog box has two tabs: 'Data Logger' and 'Position'. The 'Position' tab is active. It contains a 'Position' section with two text input fields: 'X' with the value '218' and 'Y' with the value '115'. Below these fields are two checkboxes: 'Lock' (unchecked) and 'Visible' (checked). At the bottom of the dialog are three buttons: 'OK', 'Cancel', and 'Apply'.

- Position: the (X,Y) position of the data logger. The original point is in the left top of the screen.
- Lock: lock the data logger, it cannot move.
- Visible: the data logger window is visible or not.

For example: click , set the data logger information.



The 'Data Logger' dialog box has two tabs: 'Data Logger' and 'Position'. The 'Data Logger' tab is active. It contains four text input fields: 'Server' with the value 'ndb', 'User' with the value 'sa', 'DataBase' with the value 'abc', and 'Password' (empty). Below these fields is a table with three columns: 'Data Logger', 'Triggler', and an empty column. The table has 10 rows. Below the table are three buttons: 'Add', 'Modify', and 'Delete'. At the bottom of the dialog are three buttons: 'OK', 'Cancel', and 'Apply'.

Data Logger	Triggler	

Click add, to add a new data logger information.

The screenshot shows the 'Data Logger' dialog box with the 'Object' tab selected. The 'Data Logger Item' sub-tab is active. The 'Station' section contains a 'Device' dropdown set to 'PLC Port', a 'VirStaNO' input field with '0', and a 'Station' input field with '1'. The 'Object' section has an 'Object' dropdown set to 'M' and an input field with '0', with an unchecked 'Indirect' checkbox. The 'Data' section has a 'Data Type' dropdown set to 'Bit'. An 'Add' button is visible in the background window.

The screenshot shows the 'Data Logger' dialog box with the 'Object' tab selected. The 'Data Logger Item' sub-tab is active. The 'Name' input field contains 'ccc' and the 'Trigger' dropdown is set to 'Rising Edge'. The 'Auto ID' checkbox is checked. The 'Parameters' section includes a 'Data' input field with 'name', a 'Type' dropdown set to 'WORD', a 'Length' input field with '2', and a 'Variable' input field with 'D0'. There are 'Add', 'Modify', and 'Delete' buttons. A list box on the right contains 'name'. At the bottom are 'OK', 'Cancel', and 'Apply' buttons.

**Data Logger**

Data Logger | Position |

Server:  User:

DataBase:  Password:

Data Logger	Triggler
ccc	M0

Put a button in the screen, set the object to M0, operation mode is reverse. Put a data input button in the screen, set the object to D0. Then simulate online.

Check the database:

对象浏览器 (O)

ndb (sa)

- ndb
  - abc
    - 用户表
      - dbo.ccc
        - 列
        - 索引
        - 约束
        - 相关性
        - 触发器
      - dbo.dtproperties
    - 系统表
    - 视图
    - 存储过程
    - 函数
    - 用户定义的数据类型

查询 — ndb.master.sa — 无标题1

打开表 — ndb.abc.dbo.ccc (只读)

	UID	uDateTime	name
1	1	2011-12-09 10:49:57.000	0
2	2	2011-12-09 10:50:00.000	12
3	3	2011-12-09 11:28:13.000	0
4	4	2011-12-09 11:28:18.000	21
5	5	2011-12-09 13:50:34.000	0
6	6	2011-12-09 13:50:35.000	0



## 4 Q&A

This chapter will list the questions and solutions for Touchwin SCADA. Other details please refer to Touchwin user manual.

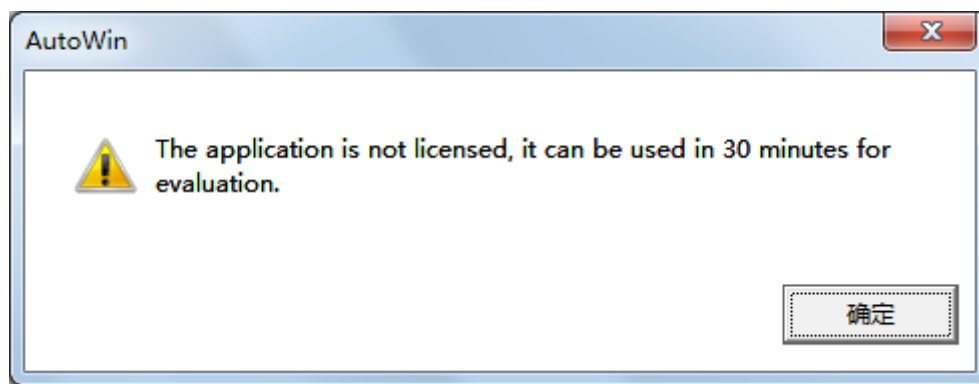
### Q1 How to get the SCADA software?

Download from Xinje company website: [www.xinje.com](http://www.xinje.com).

### Q2 How to get the SCADA manual?

Download from Xinje company website: [www.xinje.com](http://www.xinje.com).

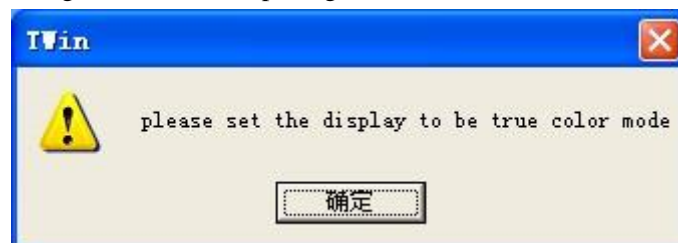
### Q3 Why cannot use the SCADA after running for 30 minutes?



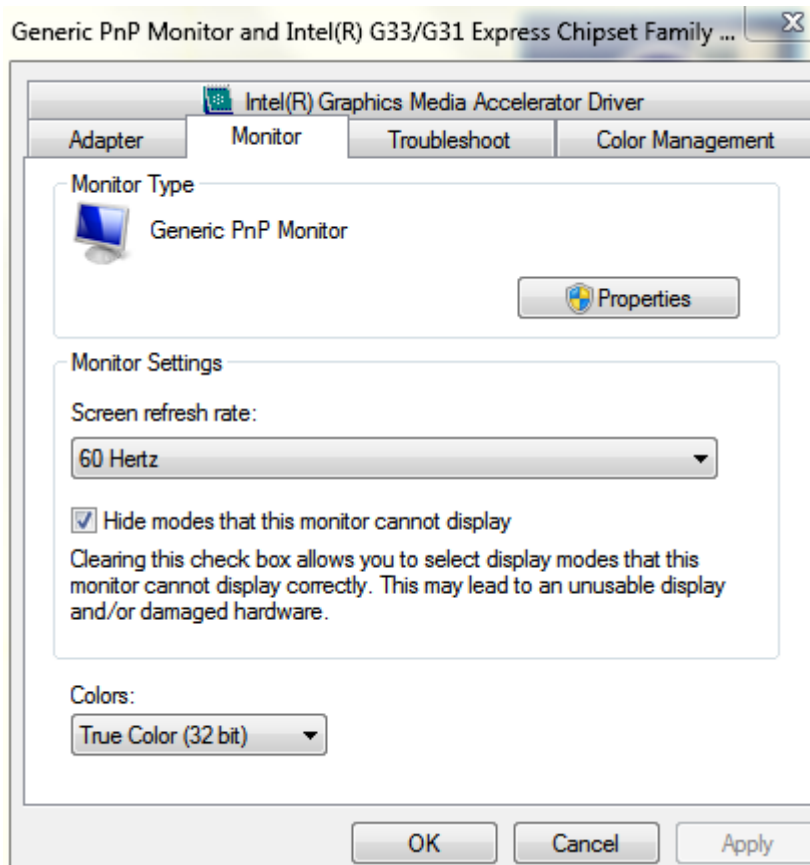
Touchwin SCADA is not free software. It will close after running for 30 minutes. Please download the file UseRocky.dll from [www.xinje.com](http://www.xinje.com) and replace the old one in Thinget\ AutoWin. Then buy the softdog from us. The softdog should be conneted to the PC before running the Touchwin SCADA.

### Q4 Why the SCADA cannot install or work normally?

1. Please close the anti-virus software and system optimization software.
2. It shows the following window when opening the SCADA.



Solution: Please adjust the PC display color to true color (32bit).

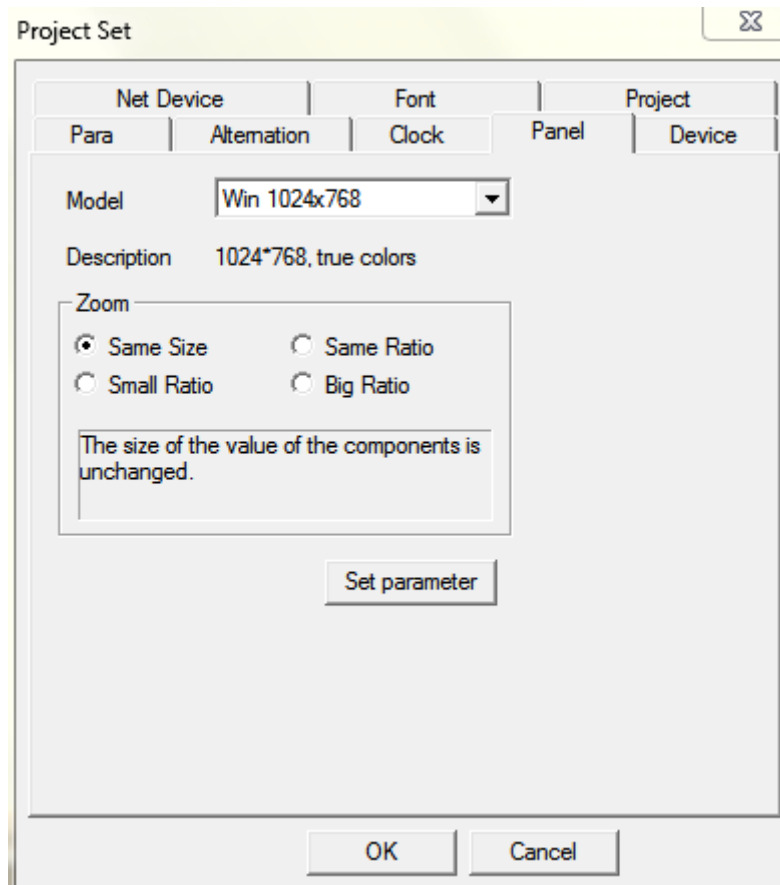


**Q5 What language does the SCADA software support?**

The software can support most of the language characters, such as English, Spanish, Japanese, German and so on.

**Q6 The SCADA screen resolution is more than the PC.**

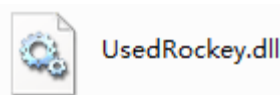
Open the SCADA software, click file/setting...



- Model            the display resolution
- Zoom            the component will zoom in/out as the resolution ratio.  
                     Same ratio: the component ratio is same to resolution  
                     Same size: not zoom in/out  
                     Small ratio: zoom in/out as the small ratio of the resolution  
                     Big ratio: zoom in/out as the big ratio of the resolution

### Q7 How to update the UsedRockey.dll file?

Download the UsedRockey.dll from [www.xinje.com](http://www.xinje.com). Replace the old file in software installation folder Thinget\AutoWin.

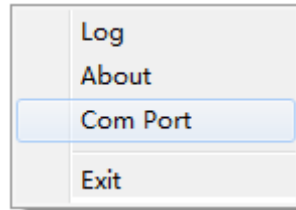


### Q8 The notes for using the softdog.

1. Connect the softdog to the PC before running the SCADA software.
2. The softdog is not limited to one PC, but it only can run in one PC at the same time.
3. Unknown problem will occur if disconnect the softdog with the PC when SCADA is running.

### Q9 Communicating error is shown when SCADA is running.

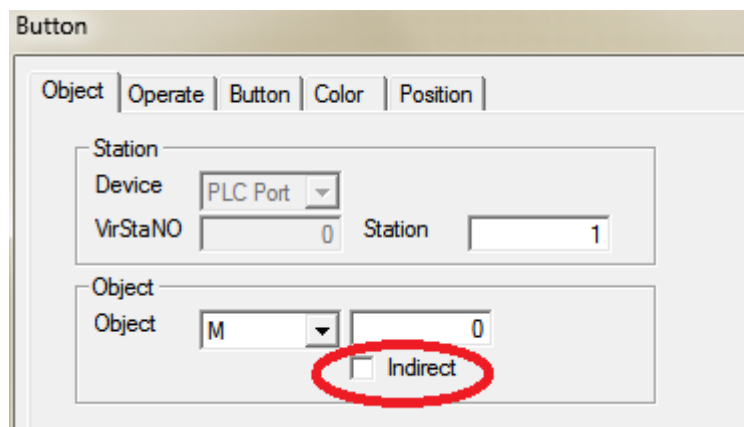
1. Confirm the PLC port device is Xinje XC series or Modbus device. SCADA only can support these two types.
2. Right click the SCADA screen; choose the right com port with PC.



3. Check the cable between PC and PLC.
4. There are more than one Touchwin software installed in the PC. Please uninstall all of them. And install only one in your PC.

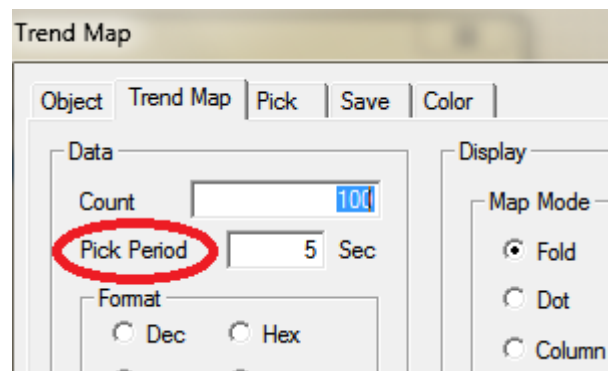
### Q10 Why the SCADA communication speed is slow with PLC?

1. There are many indirect addresses in the SCADA. The indirect address is PLC address.

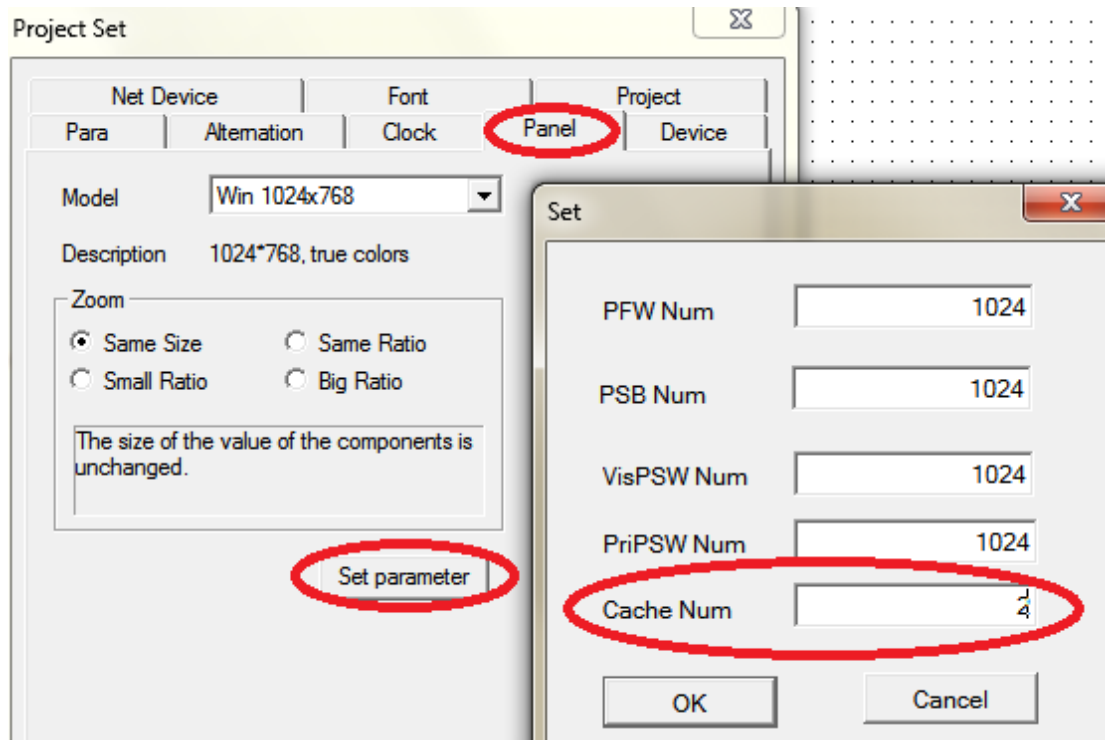


Solution: please use the HMI internal address. (such as PFW, PSW...)

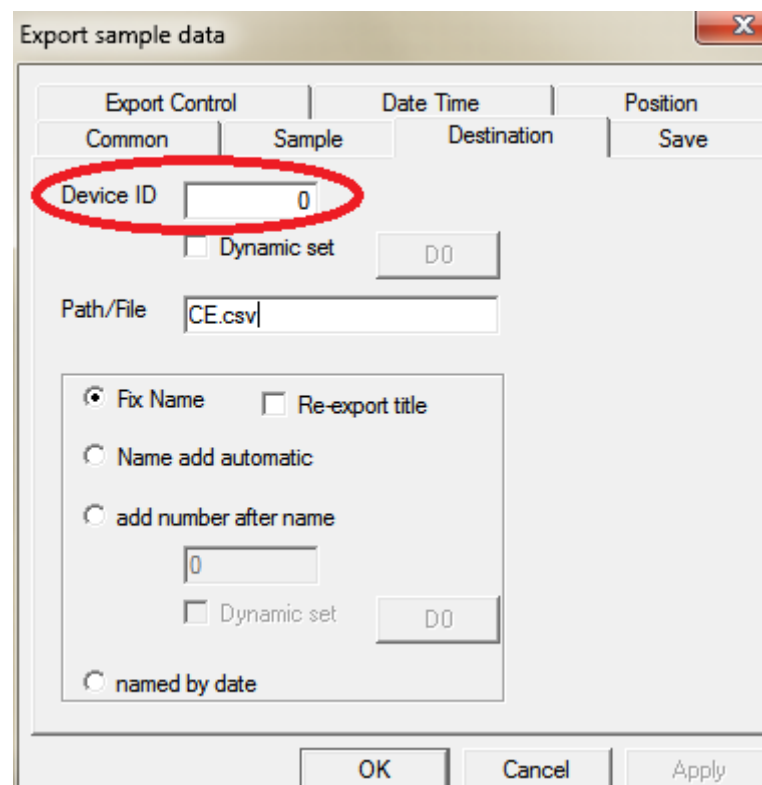
2. There are maps in the SCADA. The collection period is less than 1 minute.



Solution: click file/setting/panel, change the Cache number to 2.



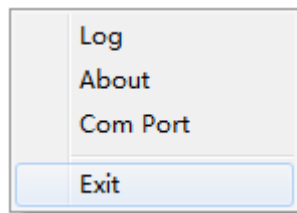
**Q11 What is the device ID of data export in SCADA?**



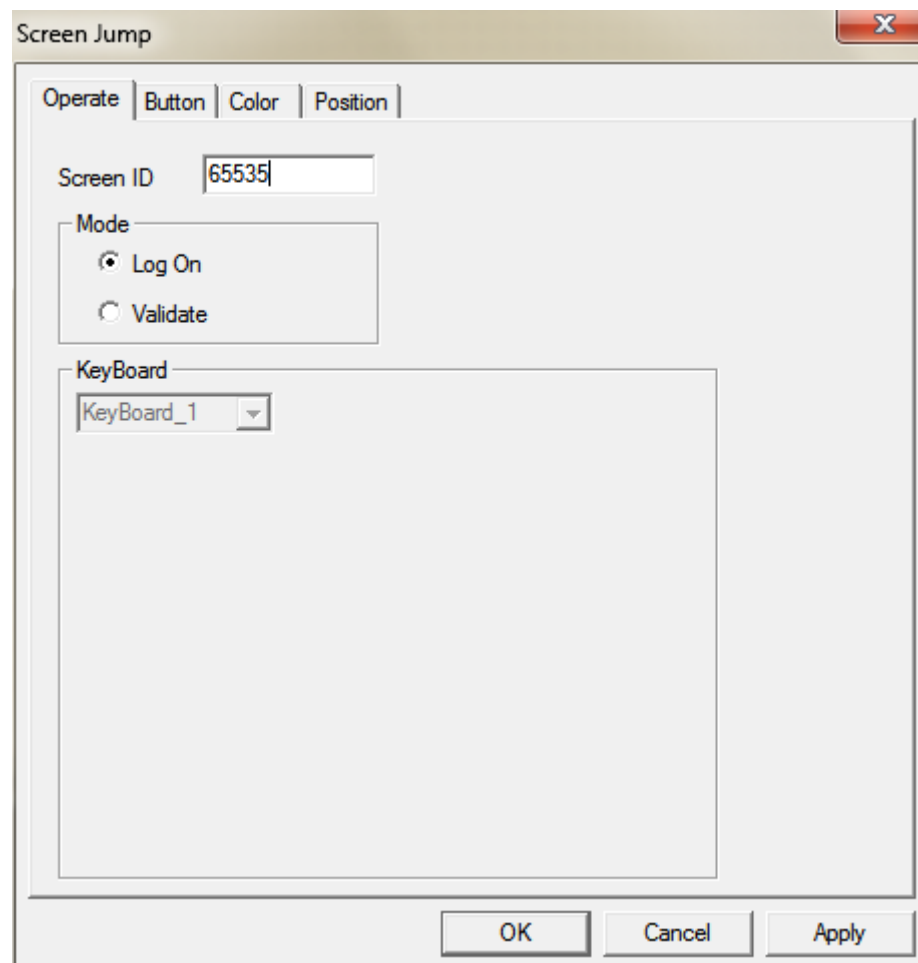
The device ID is the PC hard disk no. C:/ disk is 0, D:/ disk is 1, E:/ disk is 2...

## Q12 How to exit the SCADA?

1. Right click on the SCADA screen, choose exit.



2. Put a screen jump button on the screen, set the screen ID to 65535. When press this button, it will exit the SCADA.





**WUXI XINJE ELECTRIC CO., LTD.**

4th Floor, Building 7th, No.100 Dicui  
Rd, Wuxi, China

Tel: 86-0510-85134139

Fax: 86-0510-85111290

[www.xinje.com](http://www.xinje.com)

Email: [cheerfiona@gmail.com](mailto:cheerfiona@gmail.com)