



MC-5 Series Software Manual

MC-5 Series Manual

Menu :

1.Setup

2.Introduction :

(1)Panel Function

(2)Special Function

3.Contact us

1.Setup :

Step1.



Step2.

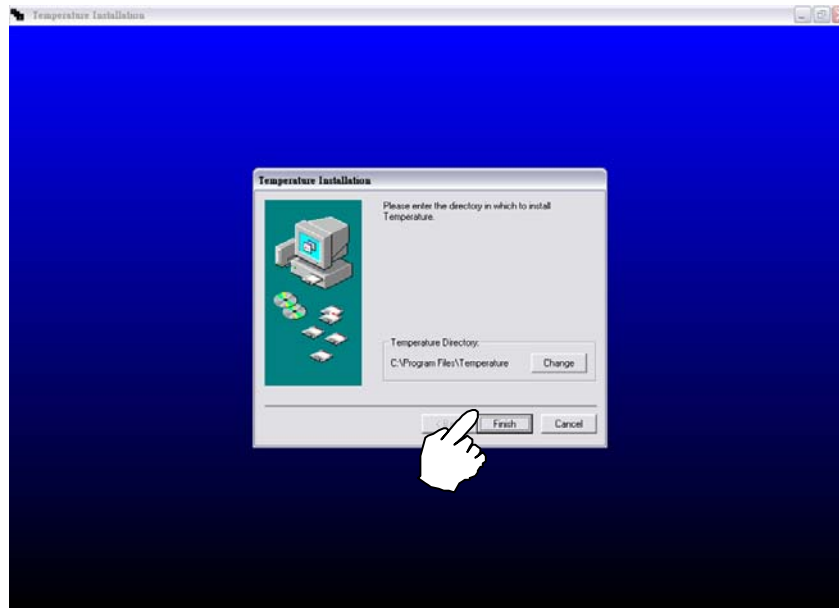


Step3.

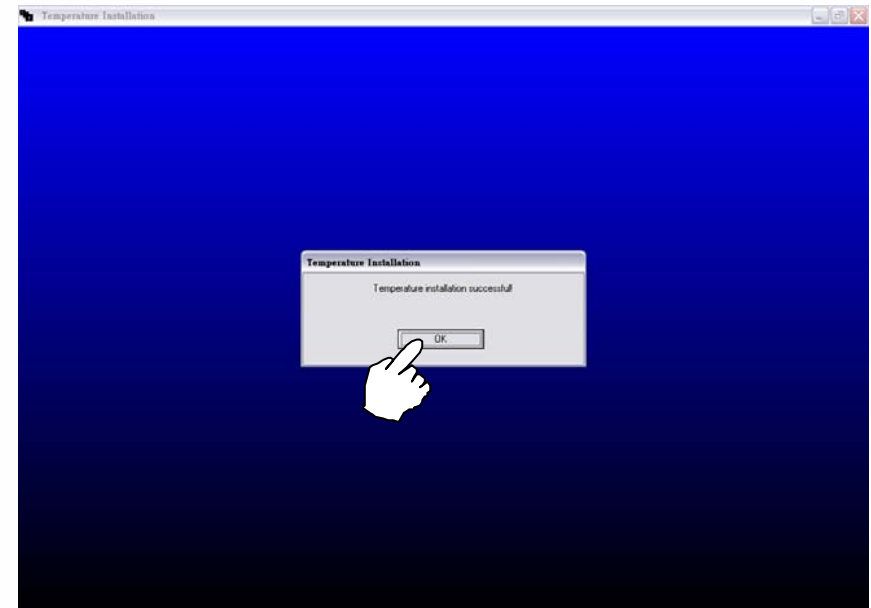


1.Setup :

Step4.



Step5.

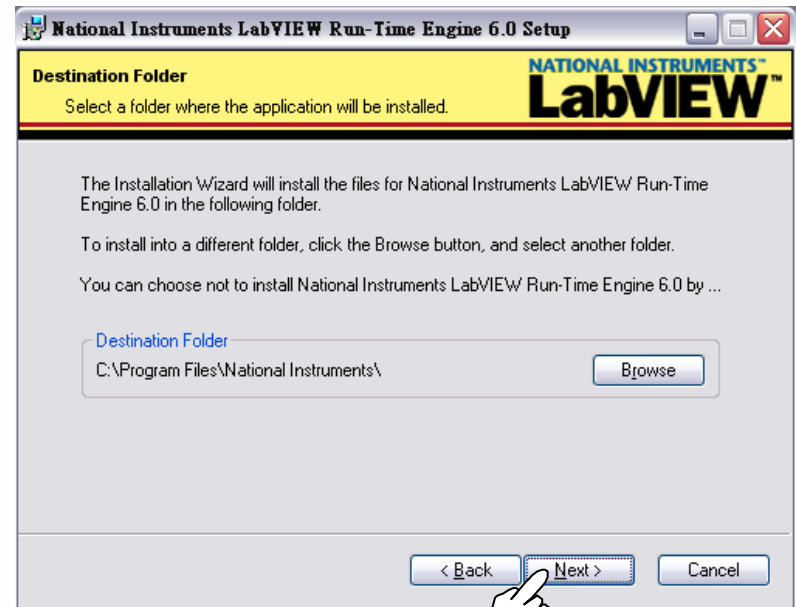


1.Setup :

Step6.

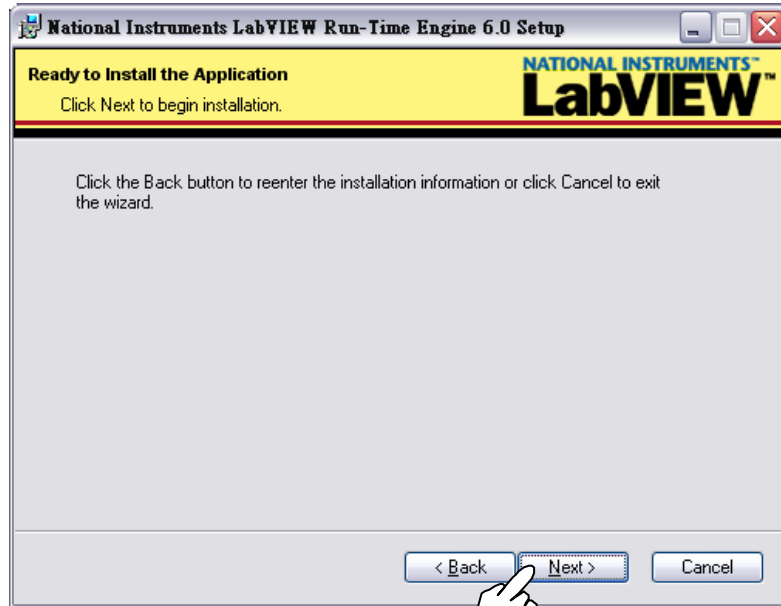


Step7.

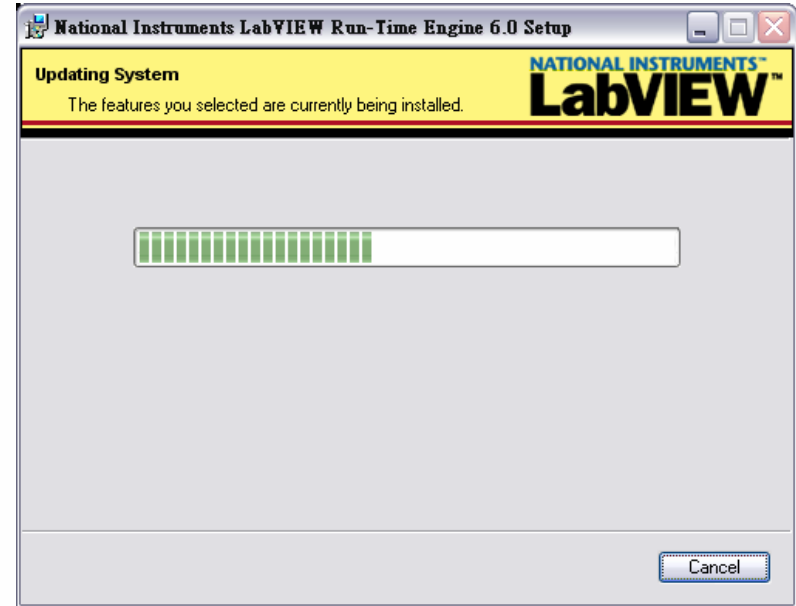


1.Setup :

Step8.



Step9.



1.Setup :

Step10.

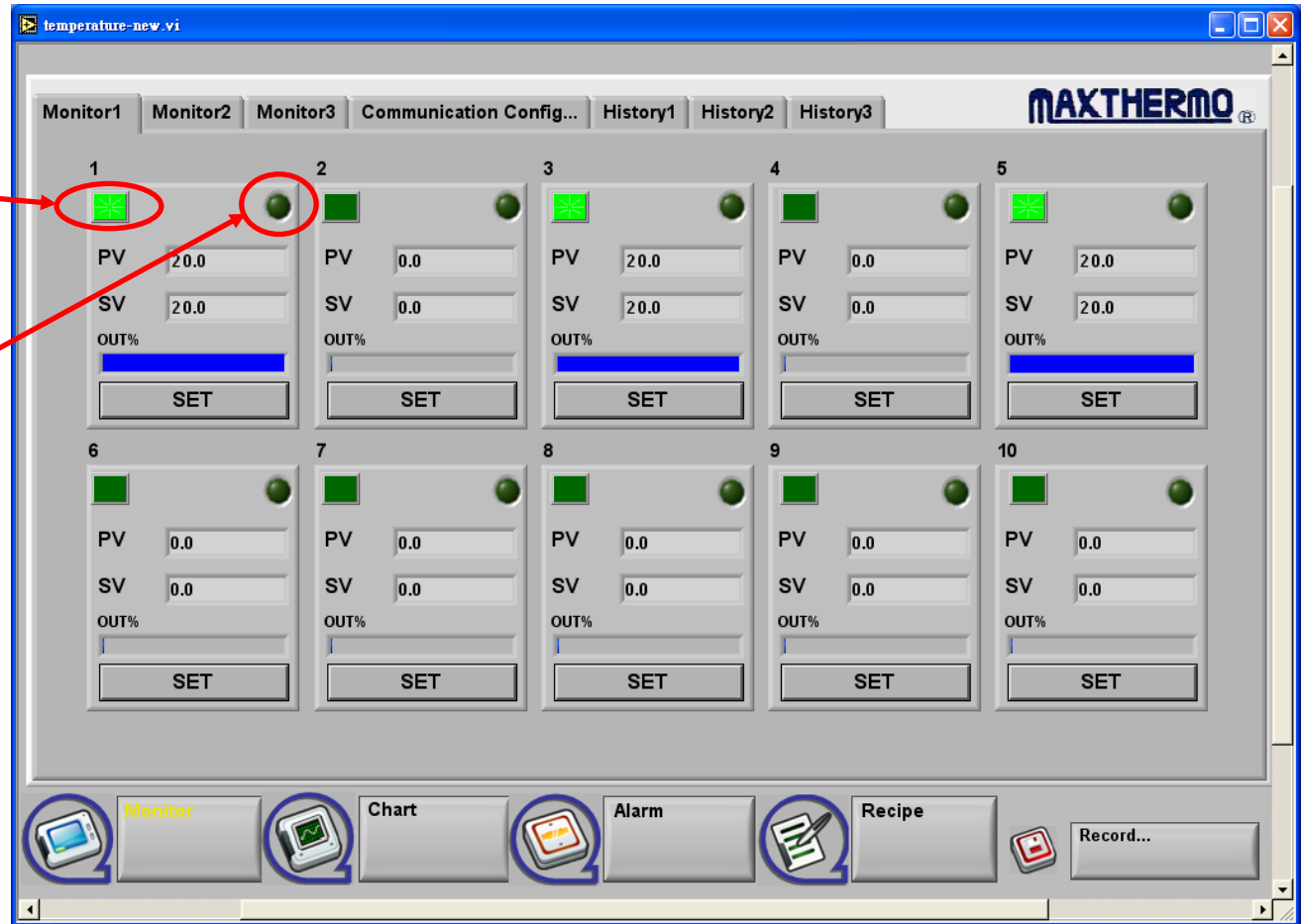


Step11.

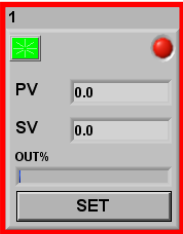


2.Introdustion :

Monitor Panel



Set Lamp

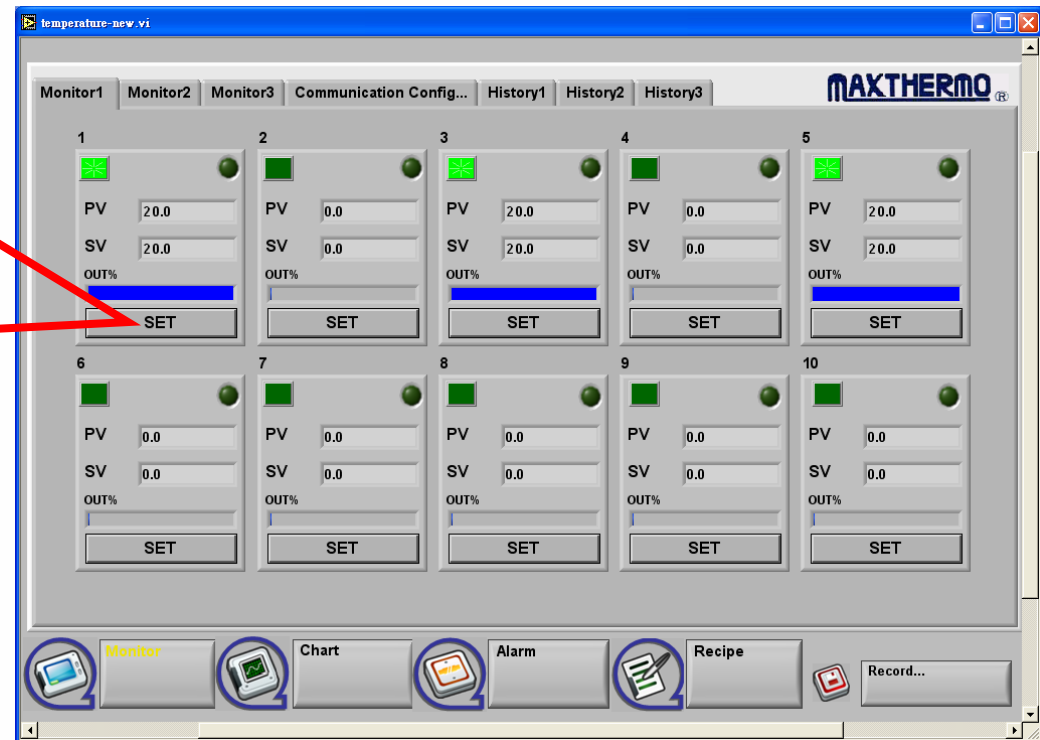
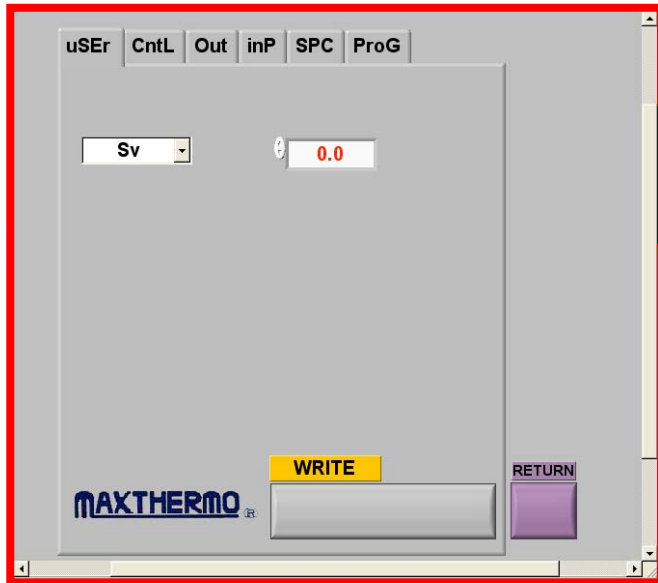


Not Communication

2.Introduction :

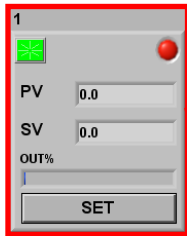
Monitor Panel

Set Parameter

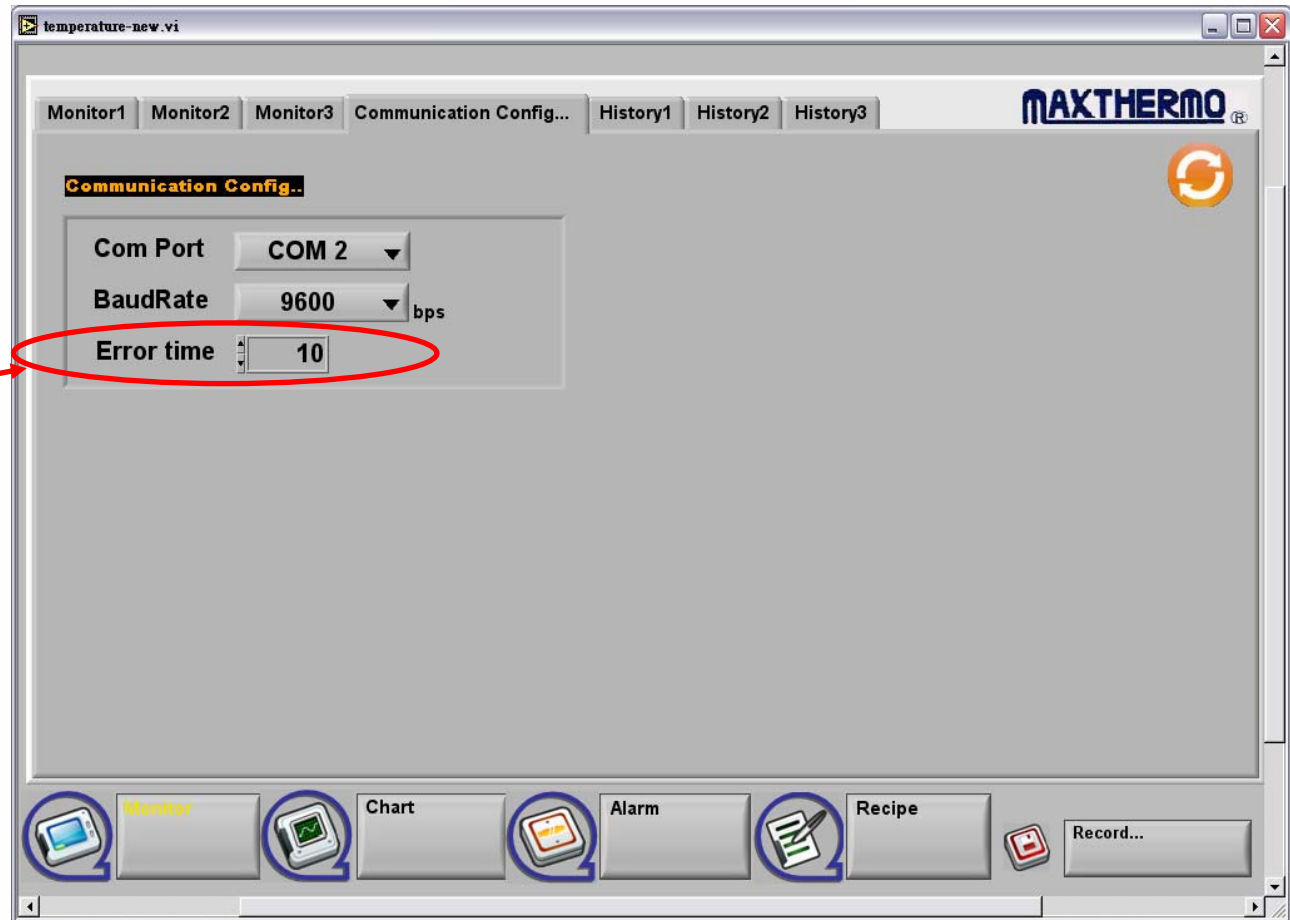


2.Introdustion :

Communication Panel



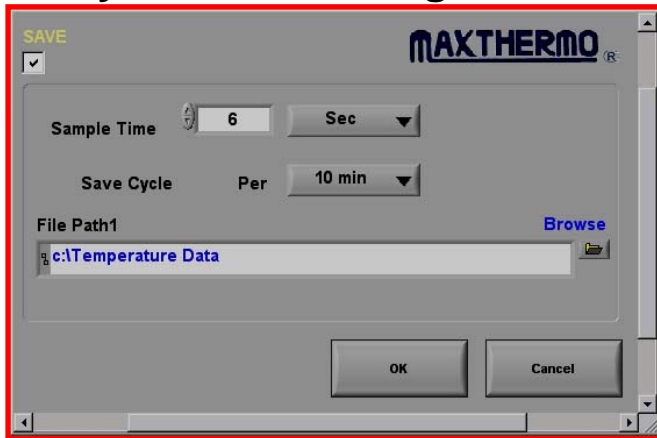
The red LED is "On"



2.Introduction :

History Panel

Every six sec write again



MAXTHERMO

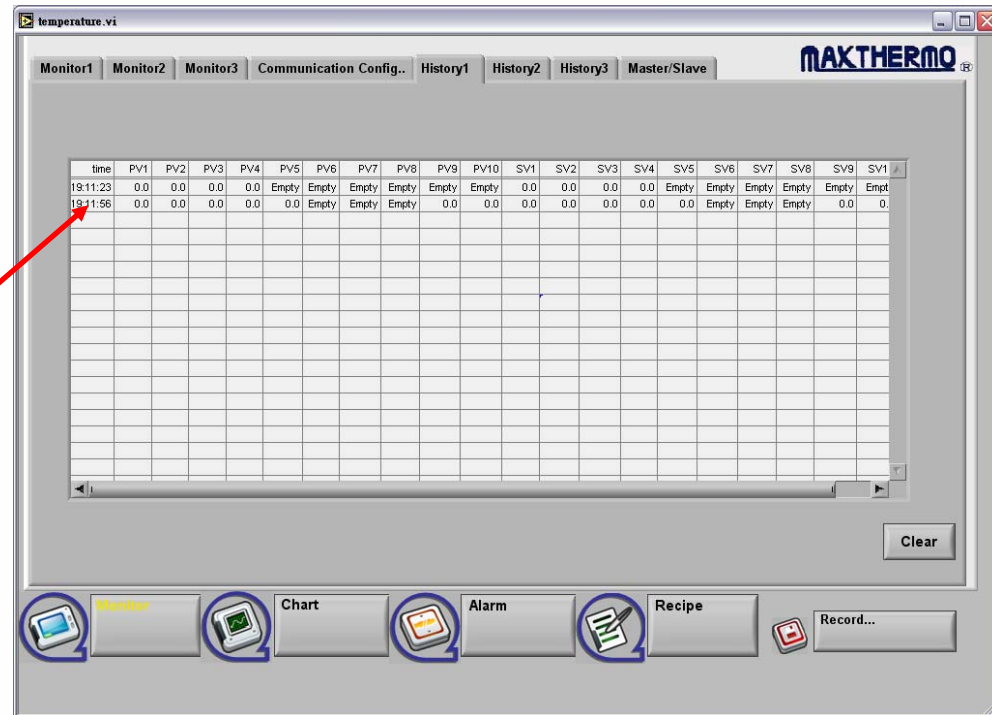
SAVE

Sample Time Sec

Save Cycle Per

File Path1 Browse

OK Cancel



temperature.vi

MAXTHERMO

Monitor1 Monitor2 Monitor3 Communication Config.. History1 History2 History3 Master/Slave

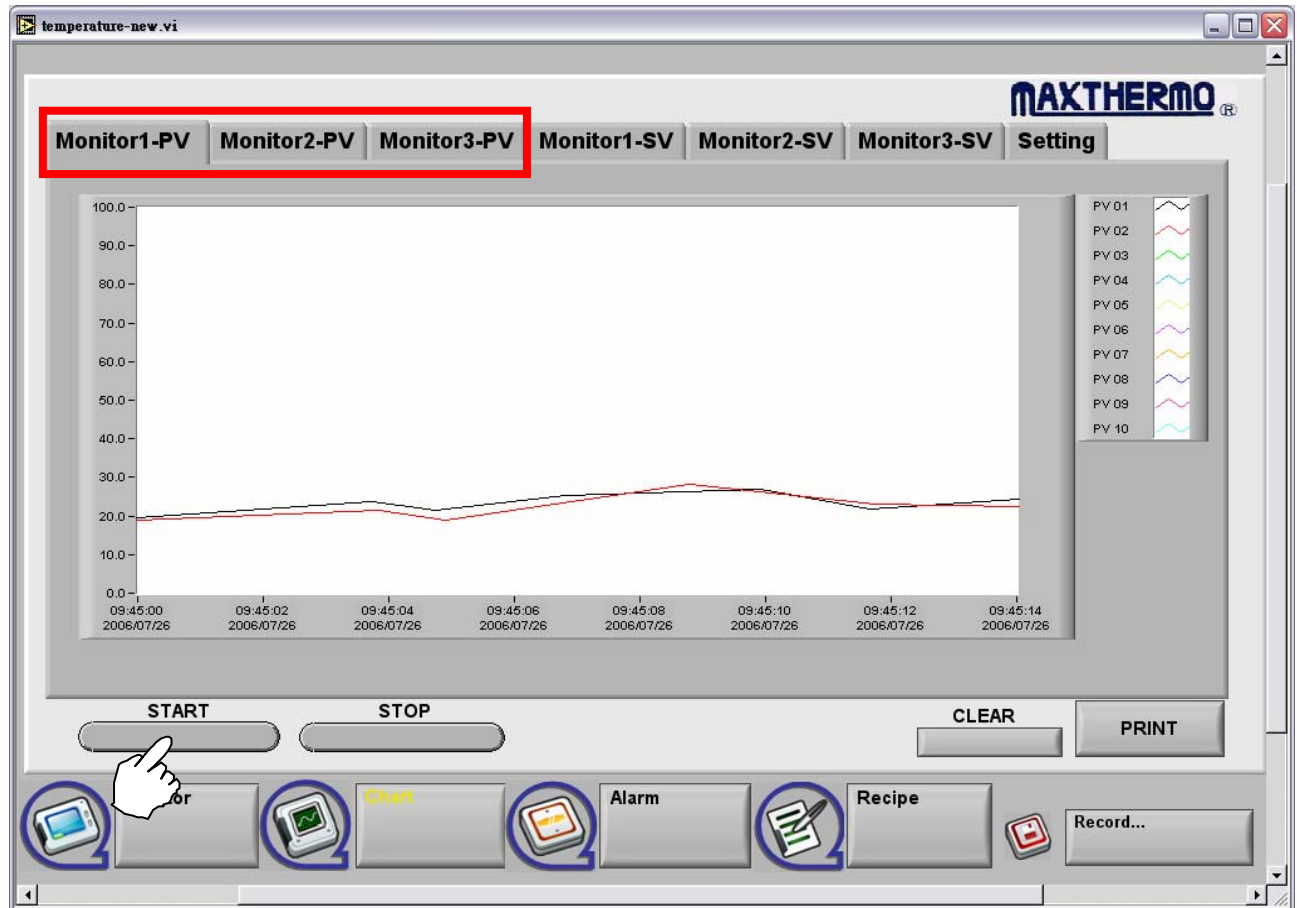
time	PV1	PV2	PV3	PV4	PV5	PV6	PV7	PV8	PV9	PV10	SV1	SV2	SV3	SV4	SV5	SV6	SV7	SV8	SV9	SV10
19:11:23	0.0	0.0	0.0	0.0	Empty	Empty	Empty	Empty	Empty	Empty	0.0	0.0	0.0	0.0	Empty	Empty	Empty	Empty	Empty	Empty
19:11:56	0.0	0.0	0.0	0.0	0.0	Empty	Empty	Empty	0.0	0.0	0.0	0.0	0.0	0.0	0.0	Empty	Empty	Empty	0.0	0.0

Clear

Monitor Chart Alarm Recipe Record...

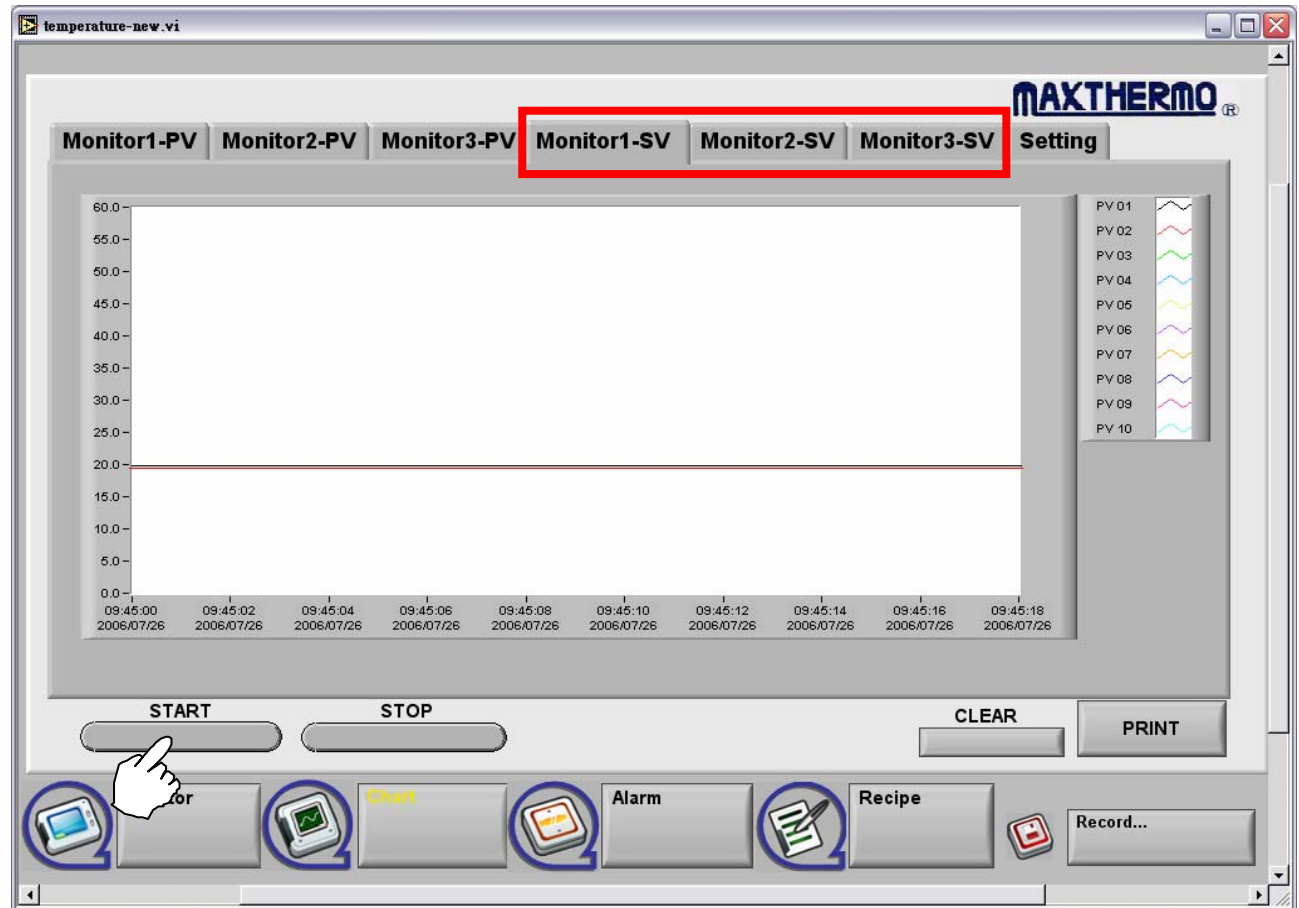
2.Introdustion :

Chart Panel (PV)



2.Introdustion :

Chart Panel (SV)

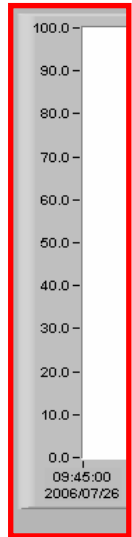


2.Introduction :

Chart Panel (Setting)

Ex-factory

Set PV



temperature-new.vi

MAXTHERMO®

Monitor1-PV Monitor2-PV Monitor3-PV Monitor1-SV Monitor2-SV Monitor3-SV **Setting**

Monitor1-PV(Min) 0.0
Monitor1-PV(Max) 100.0
Change

Monitor2-PV(Min) 0.0
Monitor2-PV(Max) 100.0
Change

Monitor3-PV(Min) 0.0
Monitor3-PV(Max) 100.0
Change

START STOP CLEAR PRINT

Monitor Chart Alarm Recipe Record...

2.Introduction :

Alarm Panel (Setting)

Choice Set

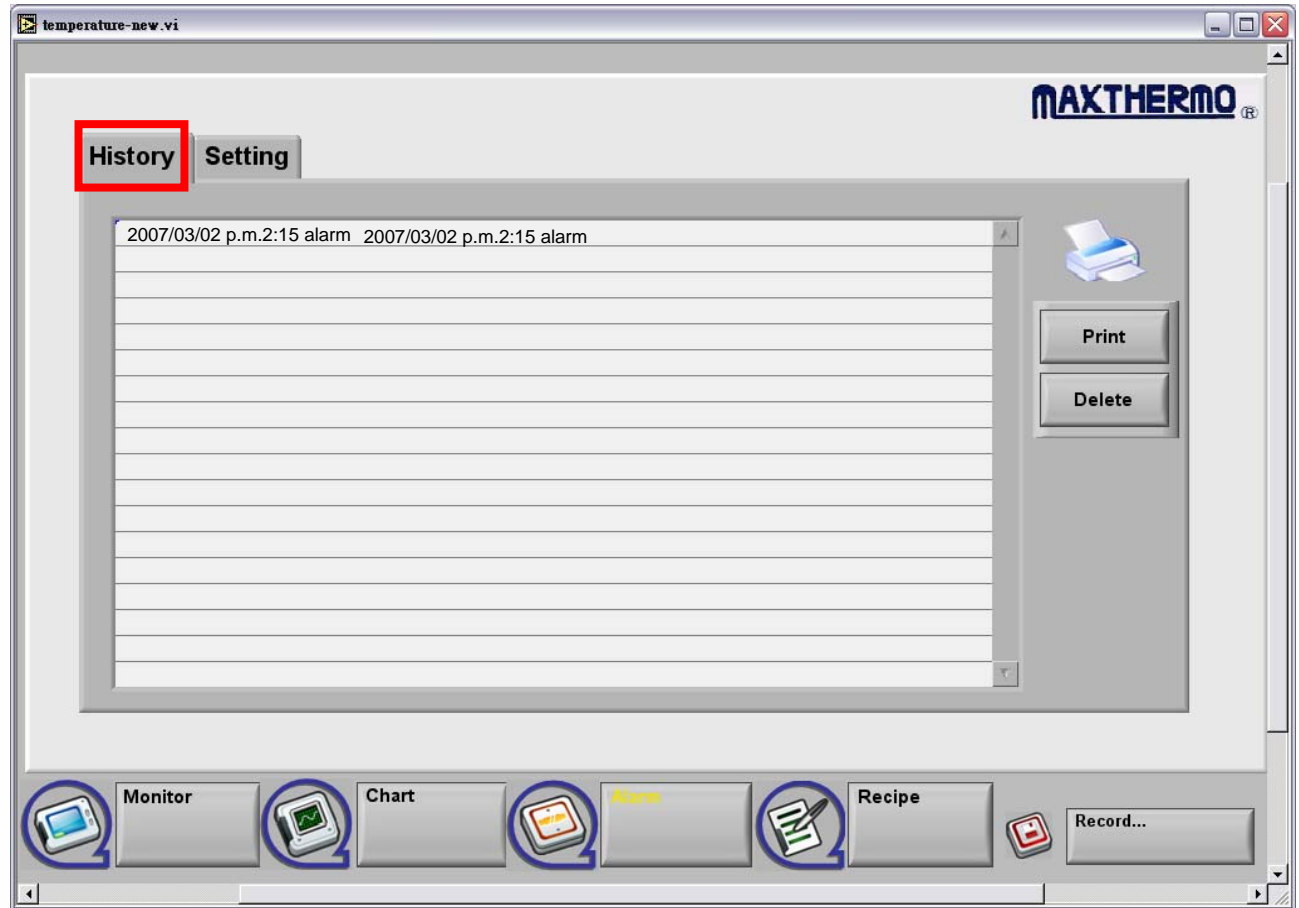
Add Item

- ✓ One Station
- One Monitor
- All

The screenshot shows the 'MAXTHERMO' Alarm Panel (Setting) interface. At the top right is the MAXTHERMO logo. Below it are two tabs: 'History' and 'Setting', with 'Setting' selected. The main area contains a table with three columns: 'Station', 'Hi Value', and 'Lo Value'. To the right of the table is an 'Add Item' dropdown menu, which is circled in red and shows 'One Station' selected. Further right are input fields for 'Station' (value 1), 'Hi Value' (value 20), and 'Lo Value' (value 10). Below these are 'Add' and 'Delete' buttons. At the bottom is a toolbar with icons for 'Monitor', 'Chart', 'Alarm', 'Recipe', and 'Record...'. A red arrow points from the 'Choice Set' menu on the left to the 'Add Item' dropdown in the interface.

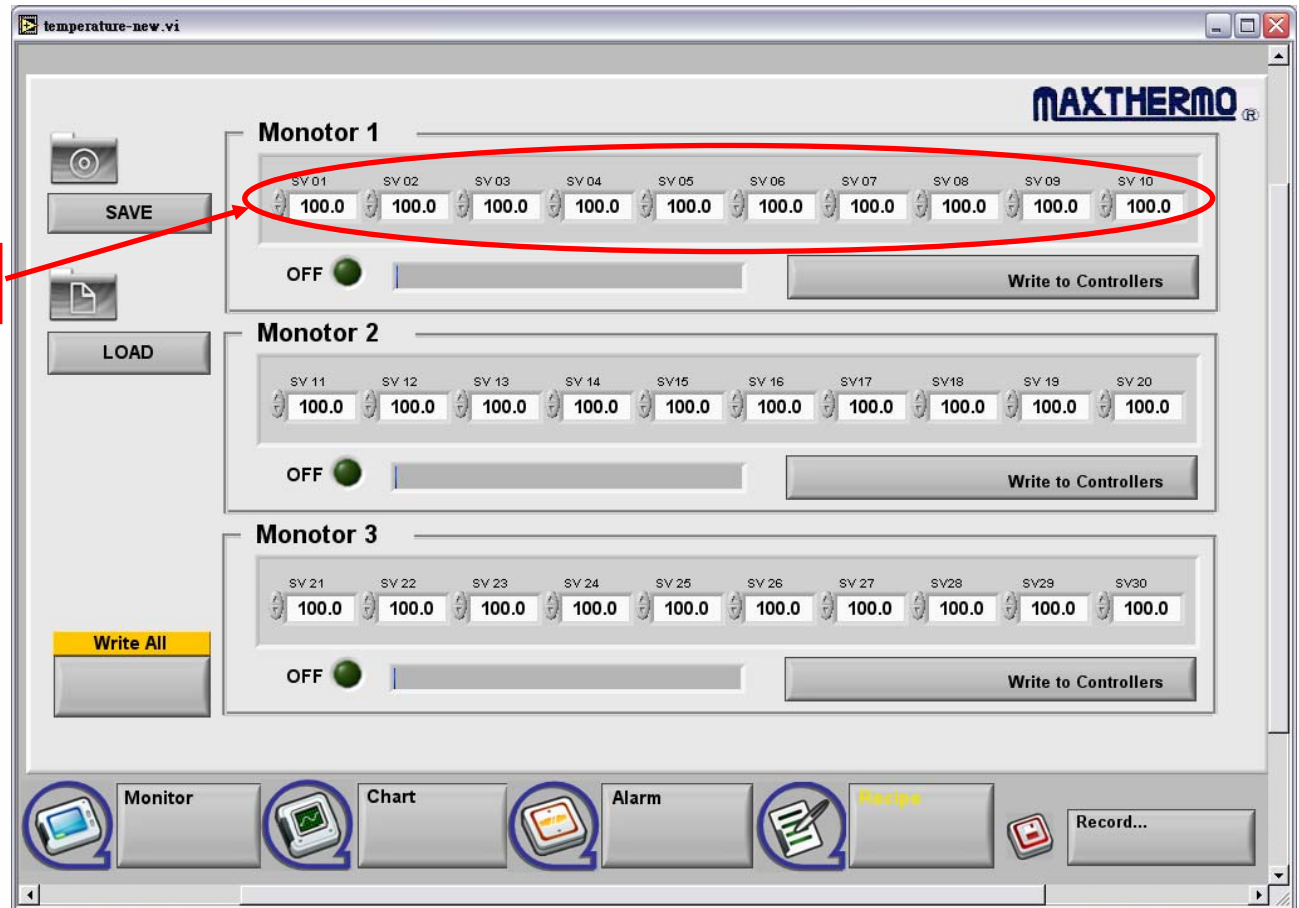
2.Introdustion :

Alarm Panel (History)



2.Introdustion :

Recipe Panel



Set Everyone SV Value

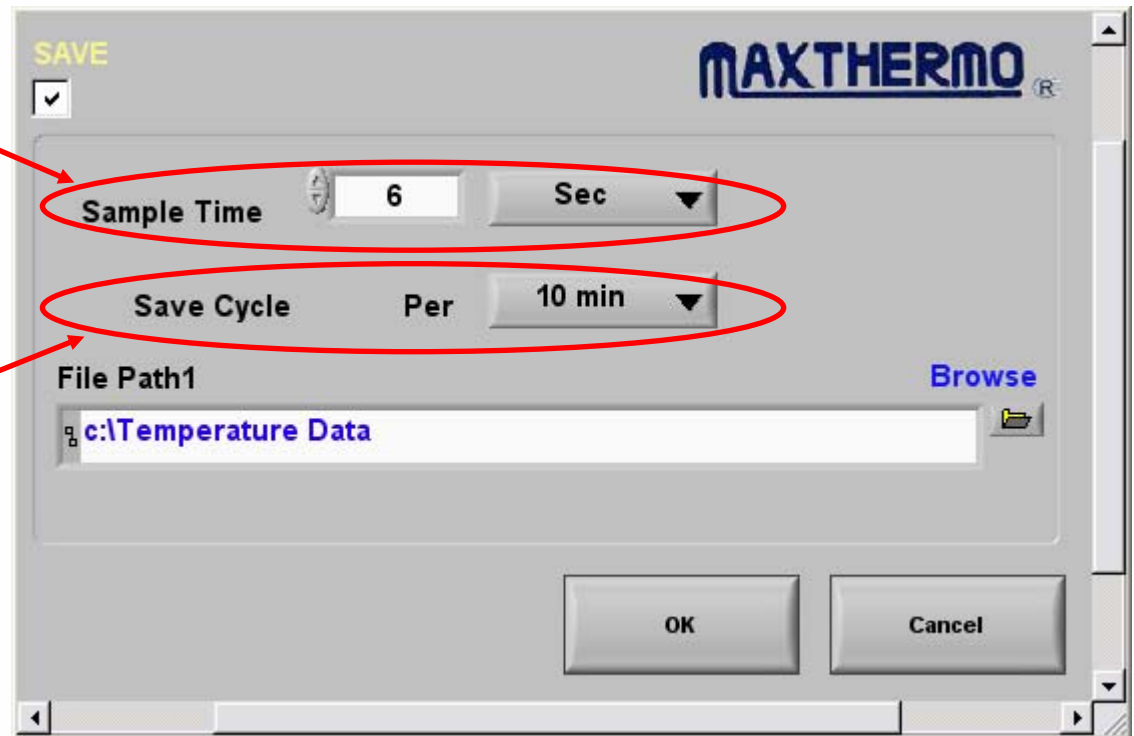
2.Introdustion :

Save Panel



Every 6 sec write again
to History

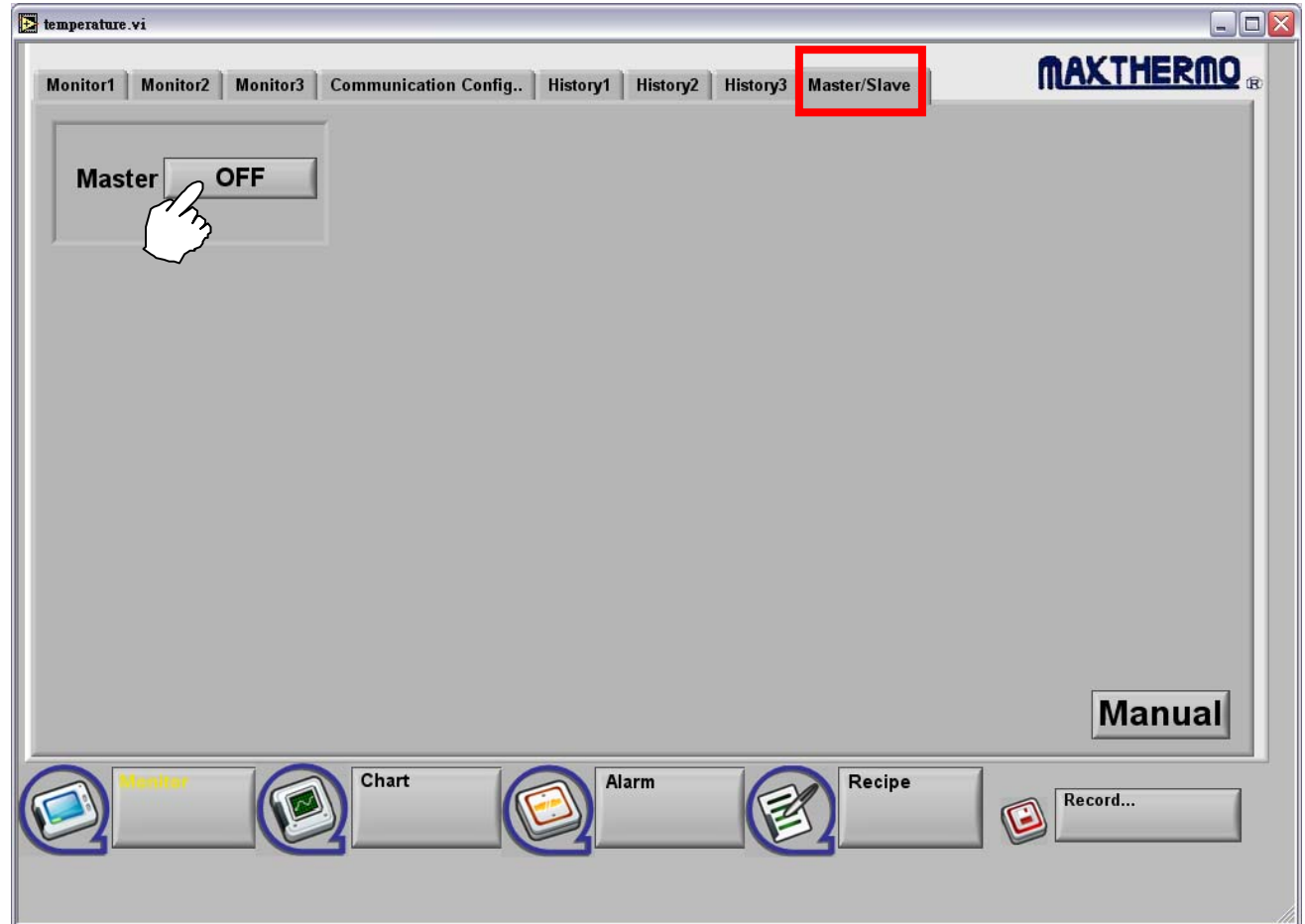
Every 10 min Save again
to File



2.Introdustion :

Master/Slave

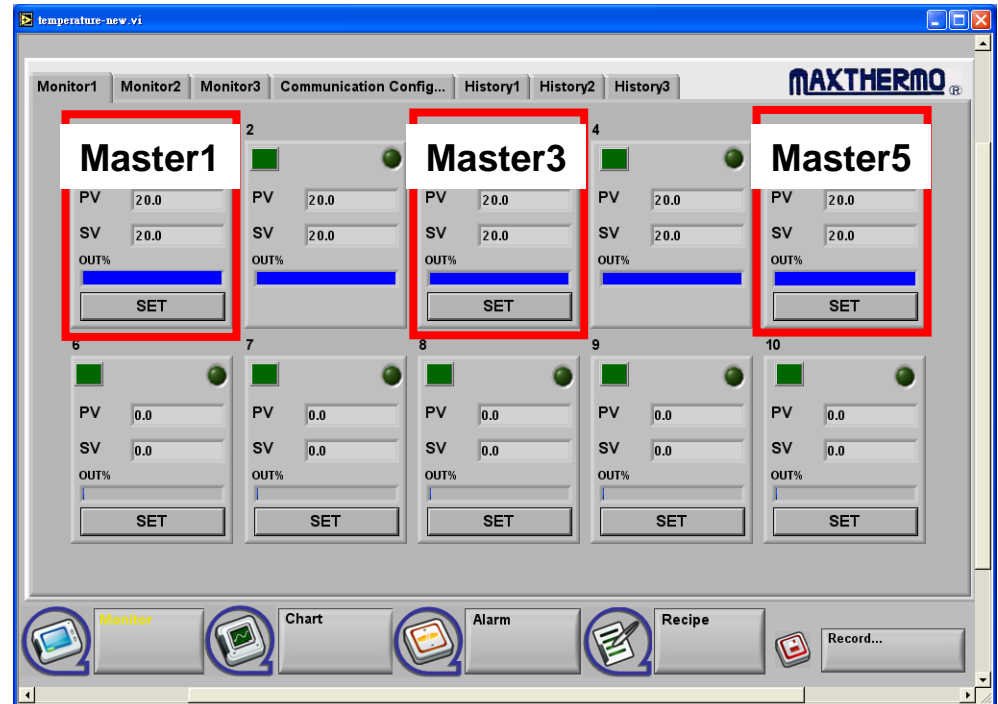
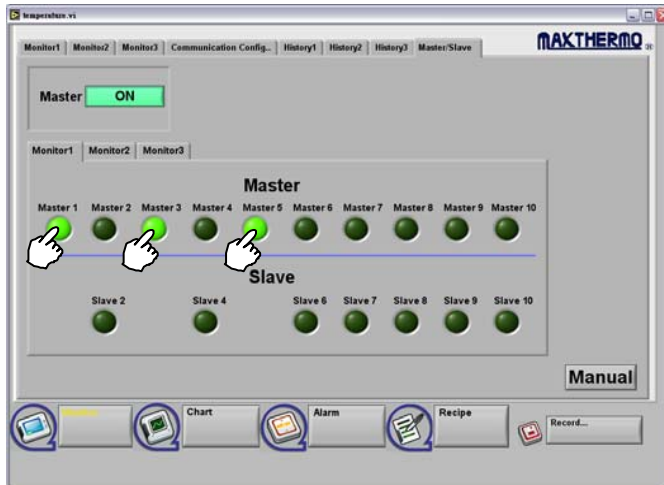
Step1.



2.Introduction :

Master/Slave

Step2.



3.Contact us :

**MAXTHERMO-GITTA GROUP CORP
MAXIMUM ELECTRONIC CO., LTD**



**Add:3C25, Taipei World Trade Center, No. 5, Sec. 5, Hsin Yi Rd.
Taipei Taiwan, R.O.C.**

**Tel:
886-2-27206601(Rep.)**

**Fax:
886-2-23455120**

**E-mail:
gitta@ms9.hinet.net**

**Factory. No. 9, Tai I 5th Street, Jen Teh Hsiang, Tainan County
Taiwan, R.O.C.**

maxthermo

MAXTECH